



http://www.sony.net/

*"WALKMAN" is a trademark of Sony Corporation.

For customers in the United States INFORMATION

This device complies with Part 15 of the FCC Rules. Operation is subject to the following two conditions: (1) This device may not cause harmful interference, and (2) this device must accept any interference received, including interference that may cause undesired operation.

You are cautioned that any changes or modifications not expressly approved in this manual could void your authority to operate this equipment.



WM-GX221

Sony Corporation ©2001 Printed in Malaysia



For customers in the United States Product registration

Please register this product on line at www.sony.com/productregistration.
<<http://www.sony.com/productregistration>>

Proper registration will enable us to send you periodic mailings about new products, services, and other important announcements. Registering your product will also allow us to contact you in the unlikely event that the product needs adjustment or modification. Thank you.

Owner's Record

The model number is located on the cassette holder and the serial number is located inside the cassette holder. Record these numbers in the space provided below. Refer to them whenever you call upon your Sony dealer regarding this product.
Model No. WM-GX221
Serial No. _____

English

Preparations

To Insert batteries **A**

Slide open the battery compartment lid, and insert two R6 (size AA) dry batteries with correct polarity.

Replace the batteries with new ones when the REC/BATT indicator dims. **B**

Note

- For maximum performance we recommend that you use Sony alkaline batteries.

To use external power

- Connect the AC power adaptor AC-E30HG (not supplied) to the DC IN 3V jack and to the wall outlet. Do not use any other AC power adaptor.
- Specifications for AC-E30HG vary for each area. Check your local voltage and the shape of plug before purchasing.



Polarity of the plug

Recording

Notes

- If the record-protect tab is broken, you cannot record on that side.
- Tapes recorded with the 2x REC TIME switch in the DOUBLE position cannot be played properly by a tape recorder without that recording mode function.
- Use new batteries when recording.
- When recording with the microphone, the sound to be recorded cannot be heard through the speakers.

1 Insert a normal (TYPE I) tape. **C**

- Set 2x REC TIME to the desired position. **NORM (4.8 cm/s)**: for optimum sound. Recommended for normal recordings. **DOUBLE (2.4 cm/s)**: for double recording time (for example, 120 minutes using both sides of a 60-minute cassette). Suitable for recording conferences, dictations, etc. Not recommended to record music.

3 Select a recording source.

To record with the built-in microphone:

- Place the unit on a hard surface (such as a desk) with the cassette holder side down, so that the microphone can record effectively.
- Set FUNCTION to TAPE.

To record with the microphone:

- Connect the supplied microphone to the MIC (PLUG IN POWER) jack.
- Set FUNCTION to TAPE. You can attach the microphone to your clothes. **D**

To record from the radio:

- Set FUNCTION to RADIO.
- Tune in to the station you want to record (see "Listening to the Radio").

- Press **●** REC. **▶** PLAY is pressed simultaneously and recording starts. The recording level is automatically adjusted.

Note

- To record FM radio programs, connect the headphones/earphones since its cord serves as an FM antenna.

To	Press/switch
Pause a recording	PAUSE
Stop recording	■ STOP
Start recording during playback	● REC during playback

To reduce noise while recording AM programs

Set the ISS (Interference Suppress Switch) to the position that reduces noise the most.

Notes on recording

- The recording level is fixed.
- Actual recording will start about 2 seconds after you press **●** REC. Press **●** REC about 2 seconds before the moment you want to start recording, or you will miss the beginning of your recording.
- Do not use a high-position (TYPE II) or metal (TYPE IV) tape. If you do, the sound may be distorted when you play back the tape, or the previous recording may not be erased completely.
- Do not connect or disconnect the headphones/earphones to/from the \odot jack while recording from the radio. The recording condition may change abruptly, or noise may be recorded.
- When recording with the microphone, do not place it near a lamp cord or a fluorescent lamp as this may cause interference noise.
- No other operation can be done while recording. For other operations, stop recording first.

中文

准备工作

安装电池 **A**

滑开电池盒盖，然后对正确极性装入两个 R6 (AA, 3号) 电池。

当 REC/BATT (录音 / 电池) 指示灯变昏暗时, 请换新电池。 **B**

注

- 为获得最佳效果, 建议您使用 Sony 牌碱电池。

要用外部电源时

- 把 AC-E30HG 交流电源转接器 (未附带) 连接到电池盒的 DC IN 3V 插孔和墙上插座。请勿使用任何其他交流电源转接器。
- AC-E30HG 的规格根据地区而异, 在购买之前请检查您所在地区的电压和插头的电极形状。



插头的电极

录音

注

- 如果防误抹小翼已被折断, 则无法在该面录音。
- 把 2x REC TIME (2 倍录音时间) 切换到 DOUBLE 位置所录的录音带是不能在不带该录音模式功能的磁带录音机上面播放妥当的。
- 录音时, 请使用新的电池。
- 当用麦克风录音时, 所录的声音是不能通过扬声器听到的。

1 插入一盒 (TYPE I) 录音带。 **C**

- 把 2x REC TIME (2 倍录音时间) 设定于所要位置。 **NORM (4.8cm/秒)**: 用于为获得最佳音响, 最好请用正常模式进行录音。 **DOUBLE (2.4cm/秒)**: 用于双倍录音时间 (例如, 使用 60 分盒带的双面可录 120 分钟)。适用于会议, 口授记录等的录音。但, 不适用于录音乐。

3 选择录音源。

要用内装麦克风录音时:

- 把机器放在坚硬平面上 (例如桌面等) 让盒带座的一面朝下, 使麦克风能有效地进行录音。
- 把 FUNCTION 设定于 TAPE。

要用麦克风录音时:

- 将附带的麦克风连接到 MIC (PLUG IN POWER) 插控。
- 把 FUNCTION 设定于 TAPE。您可以将麦克风夹在您的衣服上 **D**。

要从收音机录音时:

- 把 FUNCTION 设定于 RADIO。
- 请调入您想录的电台 (参见“听收音机”)。

4 按 **●** REC (录音)。

▶ PLAY 将同时被按而开始录音。录音电平将自动调整。

注

- 要录 FM 广播节目时, 务请连接上头戴耳机 / 耳机, 因为耳机导线也当接收 FM 的天线使用。

要	请按 / 切换
暂停录音	PAUSE
停止录音	■ STOP
播放中开始录音	播放中按 ● REC

要在录 AM 节目时减小噪声

请将 ISS (干扰抑制开关) 设定于能将噪声减至最小的位置。

录音须知

- 录音电平被固定。
- 实际录音将在您滑动 **●** REC 约 2 秒钟之后开始。请在您要开始录音时刻的约 2 秒钟之前滑动 **●** REC, 否则您将错过录音的开始部分。
- 请勿用高位 (TYPE II) 或金属 (TYPE IV) 型的录音带录音。否则播放录音带时声音可能会失真, 以前的录音内容也可能不会被完全抹消。
- 从收音机录音时, 请勿将头戴耳机 / 耳机接到 / 拔出 \odot 插孔。否则录音条件可能会突然改变, 也可能录下噪音。
- 用麦克风录音时, 请勿将麦克风靠近电灯线或日光灯, 以避免干扰噪音。
- 在录音时所有其他操作都无法进行。要进行其他操作, 请先停止录音。

要防止录音带被误录时

请折断 A 面和 / 或 B 面的防误抹小翼。要重新用该录音带录音, 用胶布盖住折断防误抹小翼后的缺口。

播放录音带

- 把 FUNCTION 设定于 TAPE。
- 设定 NORM/CrO₂/METAL 以符合磁带型。
- 把 2x REC TIME (2 倍录音时间) 设定于和录音时相同的位置。(要播放市售录音带时, 请选择 NORM。)
- 装入盒带。 **C**
- 按 **▶** PLAY。

要	请按 / 切换
停止播放	按 ■ STOP
暂停播放	PAUSE
快进绕或重绕*	停止中按 ▶▶ FF/CUE 或 ◀◀ REW/REVIEW
监听着声音快进绕 / 重绕	播放中按 ▶▶ FF/CUE 或 ◀◀ REW/REVIEW

* 当磁带已绕完或重绕完时, 如果仍放置机器不管, 将迅速消耗电池。请即按 **■** STOP。

注

- 在磁带运转中, 不可打开盒带座。

要用扬声器时

把 SPEAKER/ \odot 滑到 SPEAKER。声音将从扬声器放出而头戴耳机 / 耳机则听不到声音。

当使用扬声器时, AVLS 功能是不起作用的。

其他功能

要听听力十足的音响时

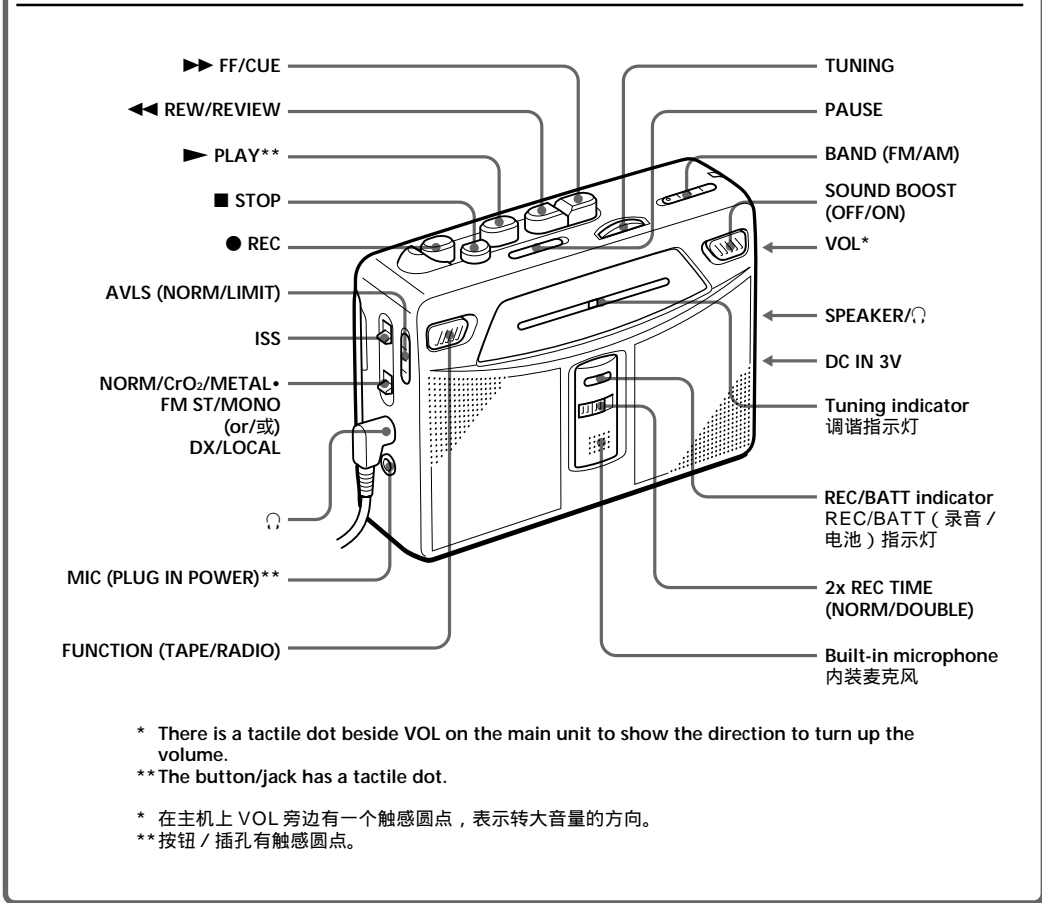
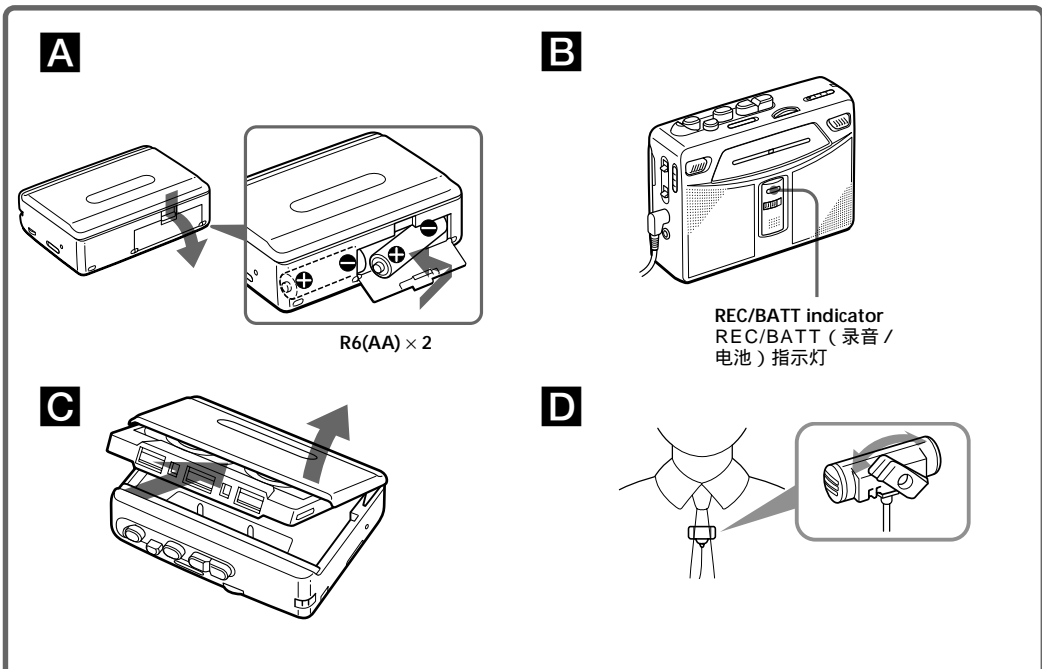
请将 SOUND BOOST (声增强器) 设定于 ON (打开) 以便能获得加强了高音和低音的声增强 (Sound Boost) 效果。

保护听觉

- AVLS (自动音量限制系统) (当使用头戴耳机 / 耳机时为限)

把 AVLS 设定于 LIMIT。便可限制最大的音量以保护您的耳朵。

(接反面)



* There is a tactile dot beside VOL on the main unit to show the direction to turn up the volume.
** The button/jack has a tactile dot.

* 在主机上 VOL 旁边有一个触感圆点, 表示转大音量的方向。
** 按钮 / 插孔有触感圆点。

