

Enjoy using Bluetooth™ wireless technology

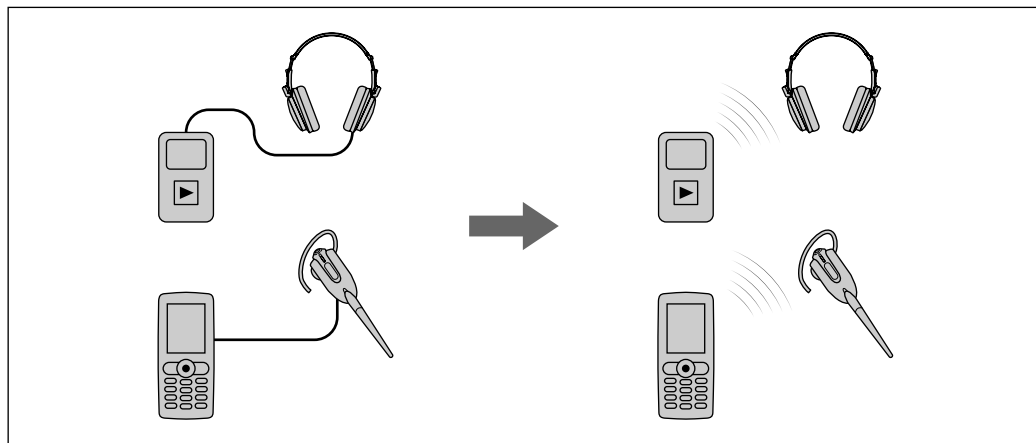
Quick Guide for BLUETOOTH function

藍芽功能快速指南

This manual includes an overview of BLUETOOTH wireless technology and instructions for basic operation of this unit. For full details on operation, see the supplied operating instructions.

本手冊包含藍芽無線科技簡介及本機的基本操作說明。有關操作的詳細說明，請參閱隨機提供的使用說明書。

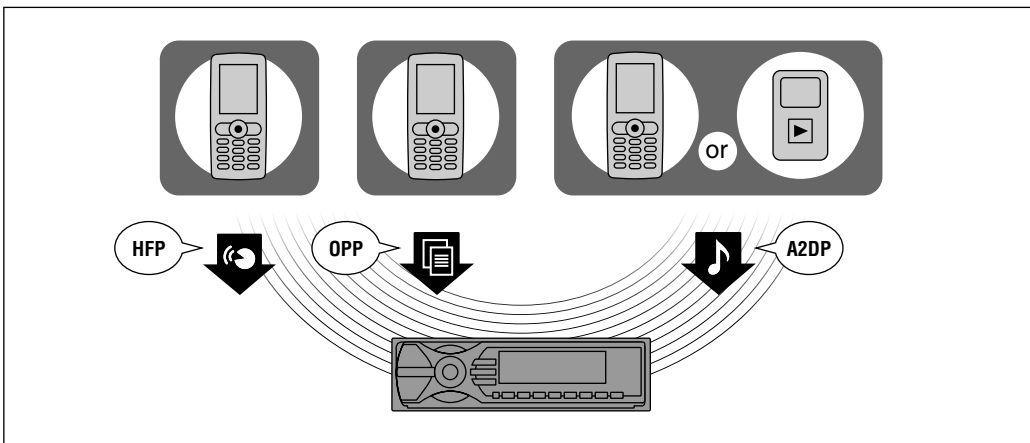
What is BLUETOOTH technology? 什麼是藍芽科技?



BLUETOOTH wireless technology is a short-range wireless technology that enables wireless data communication between digital devices, such as a cellular phone and a headset. BLUETOOTH wireless technology operates within a range of about 10 m. Connecting two devices is common, but some devices can be connected to multiple devices at the same time. You do not need to use a cable for connection since BLUETOOTH technology is a wireless technology, neither is it necessary for the devices to face one another, such is the case with infrared technology. For example, you can use such a device in a bag or pocket. BLUETOOTH technology is an international standard supported by millions of companies all over the world, and employed by various companies worldwide.

藍芽無線科技是一種短距離無線科技，可以在手機與頭戴式耳機等數位裝置之間進行無線資料通訊。藍芽無線科技可在 10 公尺左右的範圍內進行操作。一般可連接兩台裝置，但有些裝置可同時連接至多台裝置。由於藍芽科技為無線科技，所以您不需要使用傳輸線進行連接，也不需要像紅外線科技一樣對準另一台裝置。例如，您可在藍芽裝置放於背包或口袋時進行使用。藍芽技術是受世界上無數公司支持的一項國際標準，並由全球多種公司採用。

Available BLUETOOTH functions 可用藍芽功能



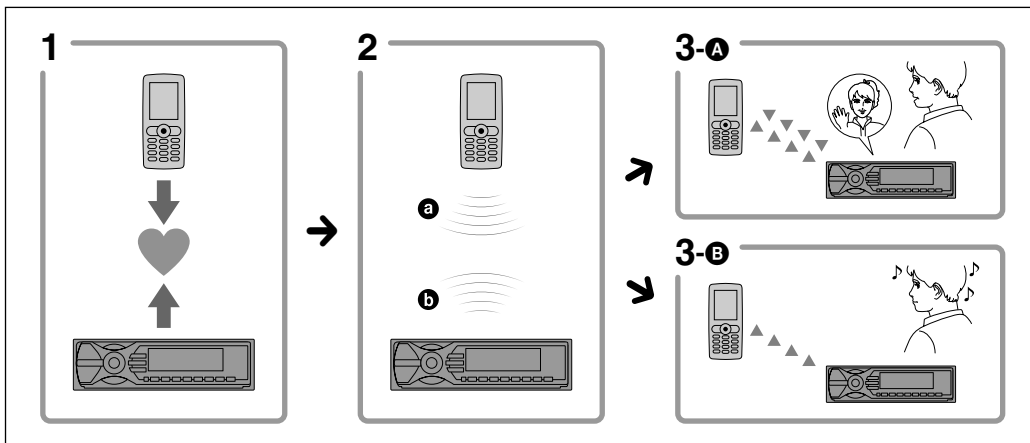
- Handsfree talking with your cellular phone in the car (supported incoming/outgoing call) – HFP
- Phonebook transfer from your cellular phone – OPP
- Music streaming from your cellular phone or portable audio device – A2DP
- Basic playback control from car audio – AVRCP

■ 藍芽功能

每一藍芽裝置規格均具有標準化功能。本機支援以下功能：
HFP (Hands-free Profile)：透過免持聽筒通話/操作話機。
OPP (Object Push Profile)：將電話簿資料從手機傳輸至本機。
A2DP (Advanced Audio Distribution Profile)：接收高音質音訊。
AVRCP (Audio Video Remote Control Profile)：控制 A/V 設備。

- 在車上用免持手機通話（支援來電/撥出）– HFP
- 傳送手機的電話簿 – OPP
- 手機或便攜音訊裝置中的音樂串流 – A2DP
- 從汽車音響進行基本播放控制 – AVRCP

3 steps to BLUETOOTH function 操作藍芽功能的 3 步驟



1 Pairing

First, register ("pair") a BLUETOOTH device (cellular phone, etc.) and this unit with each other. Once pairing is established, there is no need for pairing again.

2 BLUETOOTH connection

- Ⓐ Operate the BLUETOOTH device to make the BLUETOOTH connection.
- Ⓑ Operate this unit to make the BLUETOOTH connection to the recognized device.

3-A Talking on the phone

You can make and receive a call by operating this unit.

3-B Listening to music

You can listen to music played on the BLUETOOTH device.

About connection

Depending on the device, connection may start after pairing automatically.

1 配對

首先將某個藍芽裝置（手機等）與本機互相註冊（“配對”）。一旦建立配對，便不用再次進行配對。

2 藍芽連接

- Ⓐ 操作藍芽裝置以進行藍芽連接。
- Ⓑ 操作本機而與已辨識的裝置進行藍芽連接。

3-A 話機通話

您可透過操作本機而撥打與接聽電話。

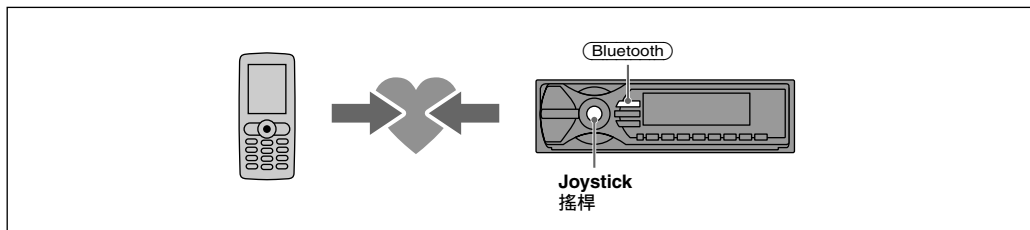
3-B 聆聽音樂

您可以聆聽藍芽裝置所播放的音樂。

連接相關事項

視裝置而定，連接可能會在配對完成後自動開始。

Step 1 – A Pairing (Searching from this unit) 配對（從本機進行搜尋）



When connecting BLUETOOTH devices for the first time, mutual registration is required. This is called "pairing." This registration (pairing) is required only for the first time, as this unit and the other devices will recognize each other automatically from the next time. (Depending on the device, you may need to input a passcode for each connection.)

Searching for a BLUETOOTH device from this unit

Check that the other BLUETOOTH device is set to allow for searching (discoverable) beforehand.

1 Press (Bluetooth).

2 Select "Connectivity" → "Search."
The process of searching for a connectable device begins, then the detected device name(s) appear in a list. If a device name cannot be received, "Unknown" will be displayed.

3 Select the device to connect.

Pairing starts.

4 Input a passcode.

Input the same passcode for this unit and the connecting device. The passcode can be either your own selected number or the number determined by the connecting device.

5 Press the joystick to confirm.

"Connected" appears and connection is complete.

第一次連接藍芽裝置時，需要共同註冊。這就叫做“配對”。只有在第一次才需要此註冊（配對），因為下一次起，本機和其他裝置會自動辨識對方。（視裝置而定，您可能必須在每次連接時輸入密碼。）

用本機搜尋藍芽裝置

檢查其他藍芽裝置設定為允許預先搜尋（可搜尋的）。

1 按 (Bluetooth)。

2 選擇 "Connectivity" → "Search"。
開始進行搜尋可連接裝置的過程，然後偵測到的裝置名稱出現在清單上。若接收不到裝置名稱，會顯示 "Unknown"。

3 選擇要連接的裝置。

開始配對。

4 輸入密碼。

用搖桿或卡片式遙控器在本機和連接裝置上輸入相同的密碼。密碼可能是您自己選擇的數字或是由連接裝置決定的數字。

5 按搖桿確認。

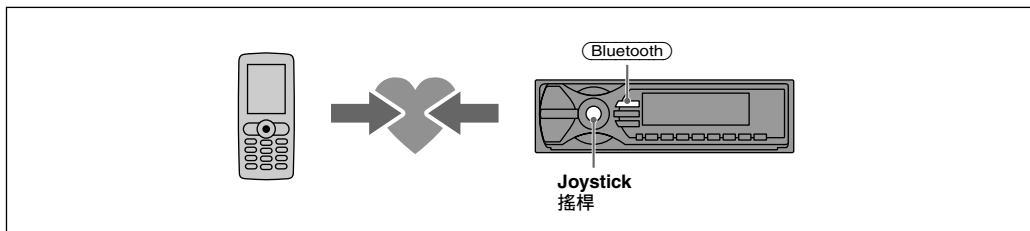
出現 "Connected"，連接完成。



MEX-BT5100

Step 1 – B Pairing (Searching from a BLUETOOTH device)

配對 (從藍芽裝置進行搜尋)



Searching for this unit from a BLUETOOTH device

Check that “Visibility” in the Bluetooth Settings menu is set to “Show.”

- 1 Press **(Bluetooth)**.
- 2 Select “Signal” → “ON.”
- 3 Select “Visibility” → “Show.”
- 4 Set the connecting device to search.
- 5 When “Allow Connection?” appears on this unit, select “yes.”
- 6 Input the passcode of the connecting device.
- 7 Press the joystick to confirm.

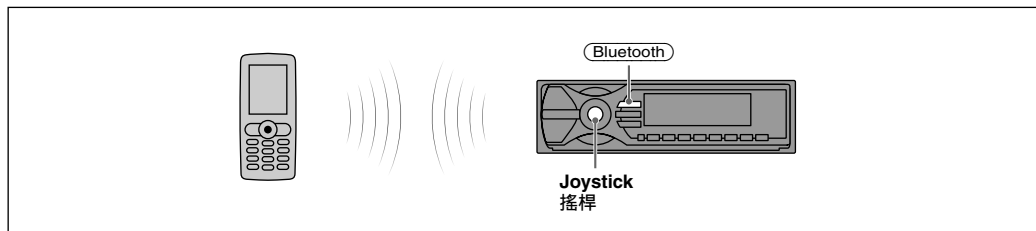
用藍芽裝置搜尋本機

確認 Bluetooth Settings 功能表中的 “Visibility” 設定為 “Show”。

- 1 按 **(Bluetooth)**。
- 2 選擇 “Signal” → “ON”。
- 3 選擇 “Visibility” → “Show”。
- 4 將連接裝置設定為搜尋。
- 5 當本機出現 “Allow Connection?” 時，選擇 “Yes”。
- 6 輸入連接裝置的密碼。
- 7 按搖桿確認。

Step 2 BLUETOOTH connection

藍芽連接



Devices are registered once paired and connected with this unit. You can select the registered device and connect it.

- 1 Press **(Bluetooth)**.
- 2 Select “Connectivity” → “Handsfree Devices” or “Audio Devices.”
- 3 Select the device to connect.
- 4 Select “Connect.”

To stop the connection

Select “Disconnect” → “yes” in step 4.

About connection indicators

The following indicator appears in the display of this unit during BLUETOOTH connection.

📶: during HFP connection

📶: during A2DP connection

當裝置與本機配對並連接時則註冊完成。您可以選擇已註冊的裝置並連接。

- 1 按 **(Bluetooth)**。
- 2 選擇 “Connectivity” → “Handsfree Devices” or “Audio Devices.”
- 3 選擇要連接的裝置。
- 4 選擇 “Connect.”

若要停止連接

在步驟 4 中，選擇 “Disconnect” → “yes”。

連接指示相關事項

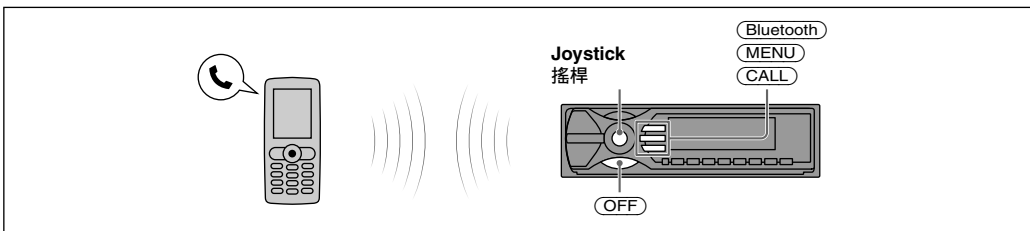
處於藍芽連接狀態時，本機顯示幕上將出現以下指示。

📶: 處於 HFP 連接狀態時

📶: 處於 A2DP 連接狀態時

Step 3 – A Handsfree talking

免持通話



Receiving calls

When receiving a call, the ring tone is output from your car speaker(s).

- 1 When receiving a call, press **(CALL)**, **(MENU)** or **(Bluetooth)**.

To reject a call

- 1 Press **(OFF)**.

Making calls

- 1 Press **(CALL)**.
- 2 Select “Dial.”
- 3 Input the phone number using the joystick or card remote commander.
- 4 Press the joystick to start the call.

Ending calls

- 1 Press **(OFF)**.

接收來電

接收來電時，鈴聲音從汽車喇叭中輸出。

- 1 接收來電時，按 **(CALL)**、**(MENU)** 或 **(Bluetooth)**。

若要拒絕接聽來電

- 1 按 **(OFF)**。

撥打電話

- 1 按 **(CALL)**。
- 2 選擇 “Dial”。
- 3 用搖桿或卡片式遙控器輸入電話號碼。
- 4 按下搖桿撥打電話。

您也可以從以下 CALL 選單撥打電話。

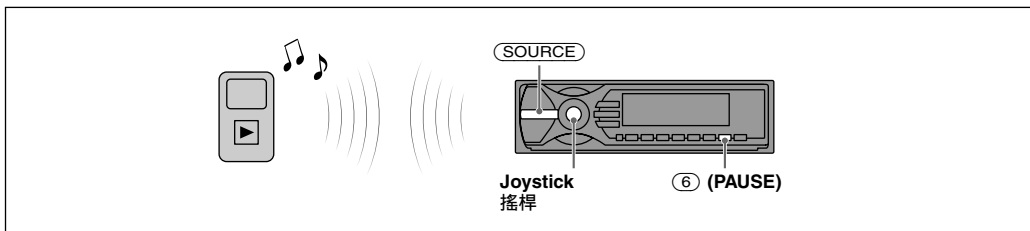
“Dialed Calls” / “Received Calls” / “Phonebook” / “Preset Dial”

結束通話

- 1 按 **(OFF)**。

Step 3 – B Music streaming

音樂串流



Listening to music from an audio device

You can listen to music of an audio device on this unit if the audio device supports A2DP of BLUETOOTH technology.

- 1 Connect this unit and the BLUETOOTH audio device.
- 2 Turn down the volume on this unit.
- 3 Press **(SOURCE)** repeatedly until “Bluetooth AUDIO” appears.
- 4 Operate the audio device to start playback.
- 5 Adjust the volume on this unit.

Operating an audio device with this unit

You can perform the following operations on this unit if the audio device supports AVRCP of BLUETOOTH technology. (The operation differs depending on the audio device.)

- To skip tracks, push the joystick left/right.
- To reverse/fast-forward a track, push and hold the joystick left/right.
- To pause, press **(6)** (PAUSE).

Operations other than the above should be performed on the audio device.

聆聽聲訊裝置中的音樂

若聲訊裝置支援藍芽科技的A2DP，您可以聆聽本機聲訊裝置上的音樂。

- 1 連接本機和藍芽聲訊裝置。
- 2 降低本機音量。
- 3 反覆按 **(SOURCE)** 直至顯示 “Bluetooth AUDIO”。
- 4 操作聲訊裝置開始播放。
- 5 調節本機音量。

用本機操作聲訊裝置

若聲訊裝置支援藍芽科技的AVRCP，您可以在本機上執行以下操作。（視聲訊裝置而定，操作會不同。）

- 若要跳過曲目，請將搖桿推向左/右。
- 若要後退/快進一個曲目，請將搖桿推向左/右並按住。
- 若要暫停，請按 **(6)** (PAUSE)。

上述除外的操作應該在聲訊裝置上執行。

Troubleshooting

故障排除

This unit cannot detect the connecting device.
Check the BLUETOOTH setting of the connecting device.

The connecting device cannot detect this unit.

- Set “Signal” to “ON.”
- Set “Visibility” to “Show.”
- While connecting to the other BLUETOOTH device, this unit cannot be detected from another device. Disconnect the current connection and search for this unit from another device. The disconnected device can be reconnected by selecting from the list of registered devices.

Pairing failed in Time Over.

Depending on the connecting device, the time limit for pairing may be short. Try completing the pairing within the time by setting a single digit passcode.

Connection is not possible.

- Depending on the other device, searching from this unit may not be possible.
- Depending on the status of the other device, searching from this unit may not be possible.
- Check the pairing procedures referring to the manual of the other device, etc., and perform the operation again.

Some functions do not work.

Check that the connecting device supports the functions in question.

本機偵測不到連接裝置。
請檢查連接裝置的藍芽設定。

連接裝置偵測不到本機。

- 將 “Signal” 設定為 “ON”。
- 將 “Visibility” 設定為 “Show”。
- 連接其他藍芽裝置時，另外的裝置無法偵測到本機。中斷目前的連線，然後在其他裝置上搜尋本機。可以在已註冊裝置的清單上選擇重新連接已中斷連線的裝置。

配對逾時失敗。

視連接裝置而定，配對的時間限制可能很短。試著通過設定個位數密碼的方式在時間內完成配對。

不能連接。

- 視其他裝置而定，可能無法在本機上進行搜尋。
- 視其他裝置的狀態而定，可能無法在本機上進行搜尋。
- 檢查說明書中其他裝置的配對和連接步驟等，然後重新執行操作。

有些功能無效。

請檢查連接裝置是否支援這些功能。

Support site

If you have any questions or for the latest support information on this product, visit the web site below:
<http://www.sony-asia.com/caraudio/>

支援網址

若您對本產品有任何問題或是想獲得最新的支援資訊，請瀏覽以下網址：
<http://www.sony-asia.com/caraudio/>