

Quick Start Guide 快速入门指南



NWZ-B162/B163/B162F/B163F



©2011 Sony Corporation Printed in China
2011/2

English

About the Manual

- **Quick Start Guide:** Explains setup, enabling you to import songs to a computer, and to transfer them to the player.
- **User Guide (HTML document):** Explains advanced features of the player and offers troubleshooting information. The User Guide (HTML document) is stored in the memory of the player. To view the User Guide (HTML document), see “Supplied Items.”

Supplied Items

- Headphones (1)
- Clip (1)
- Quick Start Guide (this manual) (1)
- Software

The software is stored in the built-in flash memory of the player, and includes the following items:

- WALKMAN Guide
- User Guide, etc.

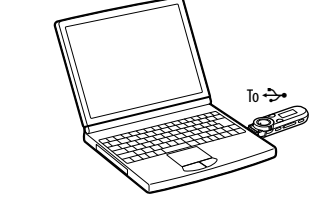
For details on how to install, see “How to Install the User Guide.”

Before Connecting the Player to Your Computer

Make sure that the OS is Windows 7, Windows XP (Service Pack 3 or later) or Windows Vista (Service Pack 1 or later), and the installed Windows Media Player version on your computer is 11 or 12.

How to Install the User Guide

1 Connect the player to your computer.



2 Select the following order with the computer.

Select [start] - [My Computer] or [Computer] - [WALKMAN] - [Storage Media].

3 Double-click [Setup.exe].

The install wizard appears.

- When you execute [Setup.exe], the [Setup.exe] file stored in the [Storage Media] folder of the player is copied to your computer for backup, and WALKMAN Guide is installed to your computer.

4 Follow the on-screen instructions.

After executing [Setup.exe], the WALKMAN Guide shortcut appears on the desktop of your computer.

5 Double-click [WALKMAN Guide] on the desktop to start the WALKMAN Guide.

For details on transferring music, refer to the User Guide included in the WALKMAN Guide.

- Hint**
- You can start the WALKMAN Guide from the [start] menu (displayed by clicking [start]).
 - If you delete the [Setup.exe] file in the player by formatting the built-in flash memory of the player, copy this data from the [Backup] folder on the computer to your player. Then connecting the player to the computer to be installed, follow the above procedure from step 1 to install. The backup data is preserved in the following [C] drive on your computer by the default install setting.
C:\Program Files\Sony\WALKMAN Guide\NWZ-B160\Backup

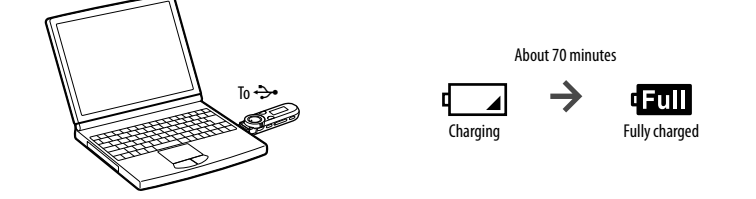
What can you do with the WALKMAN Guide?

- The WALKMAN Guide includes the following items:
- User Guide
 - The following contents can be viewed in your web browser.
 - Details on how to use the player
 - How to use software to transfer content to the player
 - Troubleshooting
 - Customer Registration Link
 - Customer Support Link
 - Other useful Links
 - Includes link information, etc., on the download site.
- The bundled items differ depending on the country/region of purchase.

- Hint**
- After executing [Setup.exe] you can use the free space in the [Storage Media] folder more effectively by formatting the built-in flash memory of the player. To format the built-in flash memory of the player, see “To initialize (format) the player.”

Charging the Battery

The player's battery is recharged while the player is connected to a running computer.



- Note**
- When you use the player for the first time, or if you have not used the player for a long time, recharge it fully. When charging a depleted battery, the power illuminator blinks clockwise and nothing appears in the display. If the player's display remains blank for more than 5 minutes, press the RESET button to reset the player.
 - If you turn on the computer, restart the computer, shut down the computer, or wake up from Sleep or Hibernate status while the player is connected to the computer, the player may malfunction. In this case, press the RESET button of the player to reset it. Disconnect the player from the computer before performing these operations.
 - To prevent battery deterioration, charge the battery at least once every half a year or every year.

Parts and Controls

Front

- REC/STOP button**
Starts/stops recording. You can record sound using the player's built-in microphone. You can also record the currently received FM program (NWZ-B162F/B163F only).
- VOL +/- button**
- ZAP button**
Changes between normal playback and ZAPPIN playback. ZAPPIN playback sequentially plays back song clips at a preset duration.
- BASS/PLAY MODE button**
Emphasizes the low sound range (Bass function), or changes the play mode.
- ▶|| button**
Starts/pauses song playback, or pauses/restarts recording.
- Shuttle switch**
Rotate to find the beginning of a song, or fast-rewinds/forwards. When a menu appears on the display, rotate to select a menu item.

Rear

- (Headphone) jack**
- Display**
- BACK/HOME button**
See “How to Use the Player.”
- Power illuminator**
Illuminated by LED.
- MIC (Microphone)**
For recording sound by the player.
- Strap hole**
- RESET button**
Use a small pin, etc.
- HOLD switch**
Disables the operation buttons to avoid accidental operation while carrying the player.
- USB cap**
When connecting with USB, remove the USB cap.
- Clip hole**
Attach the clip (supplied).

Turning the Player On and Off

To turn on	Press the ▶ button.
To turn off	Press and hold the ▶ button.

- Hint**
- If song playback is paused and there is no operation for a certain period of time, the player turns off automatically.

How to Use the Player

The Home menu is the starting point of each application.

To display the Home menu	Press and hold the BACK/HOME button.
To select an item	Rotate the shuttle switch to ◀◀▶▶ to select an item, and then press the ▶ button to confirm.
To return to the previous screen	Press the BACK/HOME button.



The icons appear in the Home menu and the color of the selected icon is inverted.

	[Voice]	Plays back/deletes sound files recorded with the player's built-in microphone.
	[Music Library]	Plays back transferred songs on the player.
	[FM] ¹	Plays FM radio, or plays back/deletes FM radio programs recorded with the player.
	[Settings]	Sets the function for music, FM ¹ , voice recording, or player settings.

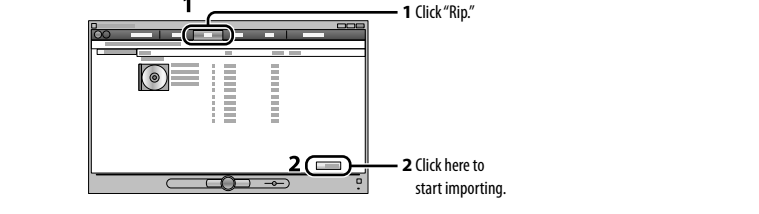
¹[FM] and items related to the [FM] function appear on NWZ-B162F/B163F only.

Importing and Transferring Music

You can transfer songs to the player using Windows Media Player 11 or 12 on your computer. If you use Windows Media Player 10 or less on your computer, install Windows Media Player 11 from the Windows Media Player download site. <http://support.microsoft.com/>

1 Import songs from CDs, etc., to Windows Media Player 11 or 12 on the computer.

For details on how to import songs from CDs, etc., refer to the Help of Windows Media Player 11 or 12. You do not need to re-import songs that have previously been imported to Windows Media Player 11 or 12.

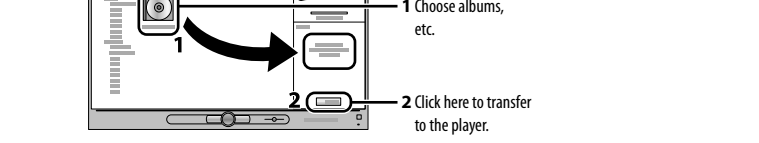


2 Connect the USB connector of the player to your computer.

Insert the USB connector fully.

3 Transfer songs from Windows Media Player 11 or 12 to the player.

[DATA ACCESS] appears in the display while transferring songs to the player.



- Note**
- Do not disconnect the player while files are being transferred. If you do, the file being transferred will be damaged.
 - You cannot transfer contents with copyright protection since the player does not support them.

- Hint**
- You can also transfer data to the player by dragging and dropping in Windows Explorer on your computer.

To delete songs transferred to the player

Connect the player to your computer, and then delete any unnecessary audio files using Windows Media Player 11, 12 or Windows Explorer.

Troubleshooting

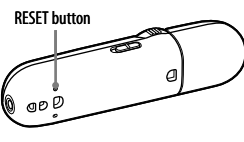
If the player does not function as expected, try the following steps to resolve the issue.

1 Find the symptoms of the issue in “Troubleshooting” in the User Guide (HTML document), and try any corrective actions listed.

On connecting with the computer, see the following “System Requirements (for the player)” and tables.

2 Connect the player to your computer to charge the battery.

You may be able to resolve some issues by charging the battery.



3 Press the RESET button with a small pin, etc.

If you press the RESET button while operating the player, stored data and player settings may be lost. After resetting the player, press the ▶|| button to turn on the player.

4 Check information on the issue in the Help of each software.

5 Look up information on the issue on one of the customer support Web sites.

About the customer support web sites, see “For the latest information.”

6 If the approaches listed above fail to resolve the issue, consult your nearest Sony dealer.

System Requirements (for the player)

- **Computer**
IBM PC/AT compatible computer preinstalled with the following Windows operating systems*1:
Windows XP Home Edition*2 (Service Pack 3 or later) / Windows XP Professional*2 (Service Pack 3 or later) / Windows Vista Home Basic (Service Pack 1 or later) / Windows Vista Home Premium (Service Pack 1 or later) / Windows Vista Business (Service Pack 1 or later) / Windows Vista Ultimate (Service Pack 1 or later) / Windows 7 Home Basic / Windows 7 Home Premium / Windows 7 Professional / Windows 7 Ultimate
Not supported by OSs other than above.
^{*1}Excluding OS Versions not supported by Microsoft.
^{*2}Excluding 64-bit OS versions.
 - **CPU:** Pentium III 450 MHz or higher for Windows XP, Pentium III 800 MHz or higher for Windows Vista, Pentium III 1 GHz or higher for Windows 7
 - **RAM:** 256 MB or more for Windows XP, 512 MB or more for Windows Vista, 1 GB or more for Windows 7 32-bit versions, 2 GB or more for Windows 7 64-bit versions
 - **Hard Disk Drive:** 600 MB or more of available space
 - **Display:**
 - Screen Resolution: 800 × 600 pixels (or higher) (recommended 1,024 × 768 or higher)
 - Colors: 8 bit or higher (16 bit recommended)
 - **USB connector** (Hi-Speed USB is recommended)
 - **Internet Explorer 7** or later
 - **Windows Media Player 11** for Windows XP and Windows Vista, Windows Media Player 12 for Windows 7
 - **Broadband Internet connection** is required to use Electronic Music Distribution (EMD) or to visit the web site.
- We do not guarantee operation for all computers even if they meet the above System Requirements.
- Not supported by the following environments:
- Personally constructed computers or operating systems
 - An environment that is an upgrade of the original manufacturer-installed operating system
 - Multi-boot environment
 - Multi-monitor environment
 - Macintosh
- Design and specifications are subject to change without notice.

Symptom	Cause/Remedy
The player cannot charge the battery.	<ul style="list-style-type: none"> • The player is not connected to a USB connector on your computer properly. <ul style="list-style-type: none"> → Disconnect the player, and then reconnect it. • The battery is charged in an ambient temperature out of the range of 5 °C (41 °F) to 35 °C (95 °F). <ul style="list-style-type: none"> → You cannot charge the battery when icon appears. Charge the battery in an ambient temperature of 5 °C (41 °F) to 35 °C (95 °F). • The computer is not on. <ul style="list-style-type: none"> → Turn on the computer. • Your computer has entered Sleep or Hibernation status. <ul style="list-style-type: none"> → Release the computer from Sleep or Hibernation status.

[CONNECTED USB] does not appear when the player is connected to the computer.	<ul style="list-style-type: none"> • The player's USB connector is not connected to a USB connector on your computer properly. <ul style="list-style-type: none"> → Disconnect the player, and then reconnect it. • A USB hub is being used. <ul style="list-style-type: none"> → Connect the player directly to a USB connector, as connection via a USB hub may not work. However, a USB hub that supplies power can be used. • Another application is running on the computer. <ul style="list-style-type: none"> → Disconnect the player, wait a few minutes, and reconnect it. If the problem persists, disconnect the player, restart the computer, and then reconnect the player. • The USB connector on your computer may have a problem. <ul style="list-style-type: none"> → Connect the player to another USB connector on your computer. • The remaining battery power is insufficient. <ul style="list-style-type: none"> → Charge the battery by connecting the player to a running computer for at least 5 minutes. When charging a depleted battery, the power illuminator blinks clockwise and nothing appears in the display.
---	--

The player becomes unstable while it is connected to the computer.	<ul style="list-style-type: none"> • A USB hub is being used. <ul style="list-style-type: none"> → Connect the player directly to a USB connector, as connection via a USB hub may not work. However, a USB hub that supplies power can be used.
--	---

To initialize (format) the player

You can format the memory of the player. If the memory is formatted, all shortcut icons and files including the User Guide (HTML document) will be erased and all setting values returned to their defaults. Be sure to verify the files stored in memory prior to formatting and export any necessary files to the hard disk of your computer or other device beforehand.

1 Press and hold the BACK/HOME button until the Home menu appears.

2 Select [Settings] – [Initialize] – [Format] – [OK], in this order.

Rotate the shuttle switch to select the item, and then press the ▶|| button to confirm. After selecting [OK] and confirming, [FORMATTING...] appears and formatting starts. When formatting is complete, [COMPLETE] appears.

- Note**
- Do not format the memory of the player in Windows Explorer. If you format the player in Windows Explorer accidentally, do it again on the player.
 - If you format the memory of the player by accident, download the User Guide (HTML document) from the web site mentioned in “For the latest information.”

Precautions

- About the headphones**
- Avoid playing the unit at so loud a volume that extended play might affect your hearing.
 - At a high volume outside sounds may become inaudible. Avoid listening to the unit in situations where hearing must not be impaired, for example, while driving or cycling.
 - As the supplied headphones are of open-air design, sounds go out through the headphones. Remember not to disturb those close to you.

Do not expose the batteries (battery pack or batteries installed) to excessive heat such as sunshine, fire or the like for a long time.

Rated current consumption 500 mA

For users in France

When replacing the headphones/earphones, please refer to the model of the headphones/earphones adapted to your unit that appears below.
MDR-E804

At high volume, prolonged listening to the personal audio player can damage the user's hearing.



Program ©2011 Sony Corporation
Documentation ©2011 Sony Corporation

For the latest information

If you have any questions or issues with a Sony product, or would like information on compatible items with a Sony product, visit the following Web sites.
For customers in the USA: <http://www.sony.com/walkmansupport>
For customers in Canada: <http://www.sony.ca/ElectronicsSupport/>
For customers in Europe: <http://support.sony-europe.com/DNA>
For customers in Latin America: <http://www.sony-latin.com/index.crp>
For customers in other countries/regions: <http://www.sony-asia.com/support>
For customers who purchased the overseas models: <http://www.sony.co.jp/overseas/support/>

简体中文

中国大陆地区的用户

使用产品前请仔细阅读本使用说明书，并请妥善保管

数码音频播放器（内置收音功能）

关于本手册 <ul style="list-style-type: none">快速入门指南: 说明如何设定，使您可将歌曲导入电脑，并将它们传送到播放器。 用户手册 (HTML 文档) : 说明播放器的高级功能，并提供故障排除信息。用户手册 (HTML 文档) 存储在播放器的内存中。若要查看用户手册 (HTML 文档)，请参阅“附件”。
--

附件

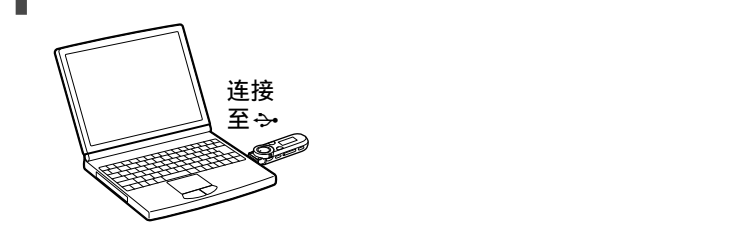
- 耳机（1）
- 卡夹（1）
- 快速入门指南（本手册）（1）
- 软件
 - 软件存储在播放器的内置闪存中，包含以下项目：
 - WALKMAN Guide
 - 用户手册等
- 有关如何安装的详细说明，请参阅“如何安装用户手册”。

将播放器连接到电脑之前

请确认操作系统为 Windows 7、Windows XP (Service Pack 3 或更高版本) 或 Windows Vista (Service Pack 1 或更高版本)，以及电脑上安装的 Windows Media Player 版本为 11 或 12。

如何安装用户手册

- 将播放器连接到电脑。**



- 在电脑上按照以下顺序进行选择。**

选择 [开始] - [我的电脑] 或 [计算机] - [WALKMAN] - [Storage Media]。

- 双击 [Setup.exe]。**

将出现安装向导。

- 执行 [Setup.exe] 时，播放器 [Storage Media] 文件夹中存储的 [Setup.exe] 文件会复制到电脑作为备份，且 WALKMAN Guide 会安装到电脑上。

- 请按照屏幕上的指示进行操作。**

执行 [Setup.exe] 之后，WALKMAN Guide 快捷方式将出现在电脑桌面上。

- 双击桌面上的  (WALKMAN Guide) 启动 WALKMAN Guide。**

有关传送音乐等操作详细说明，请参阅 WALKMAN Guide 中的用户手册。

提示

- 您可以从 [开始] 菜单启动 WALKMAN Guide (单击 [开始] 显示)。
- 如果通过格式化播放器的内置闪存来删除播放器中的 [Setup.exe] 文件，请将此数据从电脑的 [Backup] 文件夹复制到播放器。然后将播放器连接到要安装的电脑，从步骤 1 开始执行上述操作进行安装。根据默认安装设定，备份数据保存在电脑的 [C] 驱动器中。C:\Program Files\Sony\WALKMAN Guide\NWZ-B160\Backup

WALKMAN Guide 的作用？

WALKMAN Guide 包含以下项目。

- 用户手册
 - 在浏览器中可查看以下内容。
 - 播放器的详细使用说明
 - 如何用软件将内容传送到播放器
 - 故障排除

- 用户注册链接
- 用户支持链接
- 其它有用的链接

在下载站点上带有链接信息等。

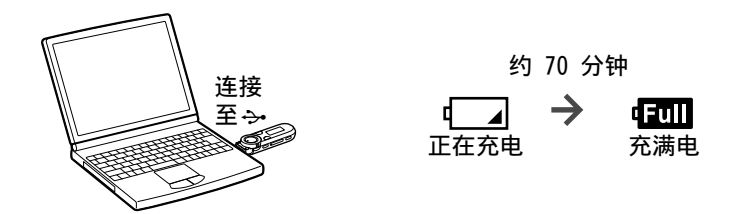
附件因购买本产品所在国家/地区而异。

提示

- 执行 [Setup.exe] 后，您可以通过格式化播放器的内置闪存更有效地使用 [Storage Media] 文件夹中的可用空间。若要格式化播放器的内置闪存，请参阅“初始化（格式化）播放器”。

电池充电

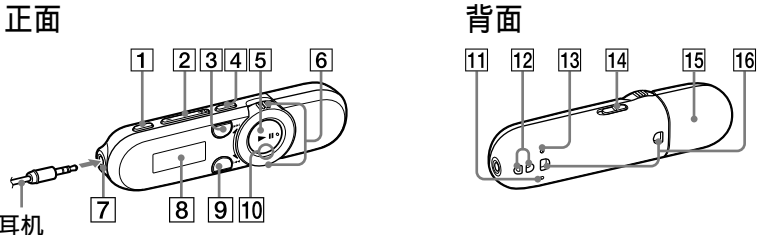
当播放器与正在运行的电脑连接时，播放器电池便进行充电。也可以连接适用本型号的 Sony USB 充电交流电源适配器（另购）对电池进行充电。



说明

- 当首次使用播放器或很长时间未使用播放器时，请将它充足电。对耗尽的电池进行充电时，电源照明器以顺时针方向闪烁，而显示屏中无内容。如果播放器的显示屏保持空白超过 5 分钟，请按 RESET 钮将播放器复位。
- 当播放器与电脑处于连接状态时，如果打开电脑、重新启动电脑、关闭电脑，或从睡眠、休眠状态恢复，则播放器可能会发生故障。在此情况下，请按播放器的 RESET 按钮复位播放器。进行这些操作之前，请断开播放器与电脑的连接。
- 为防止电池性能降低，请每半年或每年对电池至少充电一次。

各部分及控制按钮



- REC/STOP 钮**
 - 开始/停止录音。您可使用播放器内置麦克风录制声音。您还可录制当前收听 的 FM 节目（仅限 NWZ-B162F/B163F）。
- VOL +/- 钮**
- ZAP 钮**
 - 在正常播放和 ZAPPIN 播放之间切换。ZAPPIN 播放功能将按顺序播放预设时间歌曲片段。
- BASS/PLAY MODE 钮**
 - 增强低音范围（低音功能）或改变播放模式。
- ▶|| 钮**
 - 开始/暂停歌曲播放或暂停/重新开始录音。
- 飞梭开关**
 - 转动此开关寻找歌曲的开头，或快退/快进。当屏幕上出现菜单时，转动此开关选择菜单项目。
- （耳机）插孔**
- 显示屏**
- BACK/HOME 钮**
 - 请参阅“使用播放器的方法”。
- 电源照明器**
 - 采用 LED 照明。
- MIC（麦克风）**
 - 用于使用播放器录制声音。
- 挂绳孔**
- RESET 钮**
 - 用细针等。
- HOLD 开关**
 - 携带播放器时禁用操作钮以防止出现意外操作。
- USB 端口盖**
 - 当进行 USB 连接时，请取下 USB 端口盖。
- 卡夹孔**
 - 装上卡夹（提供）。

打开和关闭播放器

打开	按 ▶ 钮。
关闭	按住 ▶ 按钮。

- 提示**
- 如果暂停歌曲播放且一段时间内无任何操作，播放器将自动关闭。




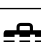
使用播放器的方法

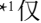
每项应用程序都要从主菜单开始。

显示主菜单	按住 BACK/HOME 钮。
选择项目	将飞梭开关转动至 ◀◀/▶▶ 选择一个项目，然后按 ▶ 按钮进行确认。
返回上一个画面	按 BACK/HOME 钮。



主菜单中出现的图标和所选图标的颜色会反转。

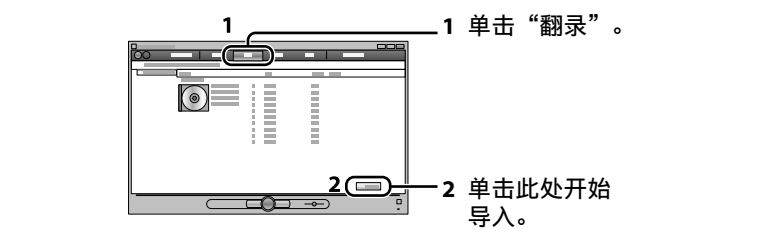
	[声音]	播放/删除用播放器的内置麦克风录制的声音文件。
	[曲库]	播放已传送到播放器中的歌曲。
	[FM 调频收音]	播放 FM 广播，或播放/删除播放器录制的 FM 广播节目。
	[设定]	设定音乐、FM 调频收音*1、录音或播放器设置的功能。

*1仅 NWZ-B162F/B163F 上出现  和与 [FM 调频收音] 相关的功能。

导入和传送音乐

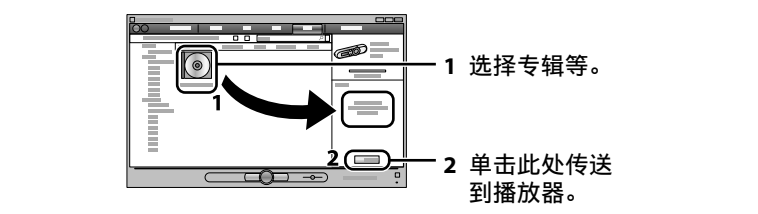
您可在电脑上使用 Windows Media Player 11 或 12 将歌曲传送到播放器。如果您电脑中使用的是 Windows Media Player 10 或更低的版本，请从 Windows Media Player 下载网站安装 Windows Media Player 11。http://support.microsoft.com/

- 在电脑上将歌曲从 CD 等导入 Windows Media Player 11 或 12。**
 - 有关如何将歌曲从 CD 等导入的详细说明，请参阅 Windows Media Player 11 或 12 的帮助。您无需再次导入以前已经导入 Windows Media Player 11 或 12 的歌曲。



- 将播放器的 USB 接口连接到电脑。**
 - 将 USB 接口完全插入。

- 将歌曲从 Windows Media Player 11 或 12 传送到播放器。**
 - 当歌曲传送到播放器时，显示屏中出现 [数据访问]。



说明

- 正在传送文件时，请勿断开播放器连接。否则，正在传送的文件会被损坏。
- 由于播放器不支持，因此无法传送有版权保护的内容。

提示

- 您也可以 在电脑上的 Windows Explorer 中通过拖放方式将数据传送到播放器。

删除已传送到播放器的歌曲

将播放器连接至电脑，然后使用 Windows Media Player 11、12 或 Windows Explorer 删除任何不需要的音频文件。

故障排除

如果播放器工作异常，请尝试采取以下步骤解决问题。

- 请参照用户手册 (HTML 文档) 的“故障排除”中的问题症状，尝试列出的任何解决办法。**

关于与电脑的连接，请参阅以下“系统要求（对于播放器）”和表格。

- 将播放器连接至电脑对电池进行充电。**
 - 对电池充电可能会解决某些问题。

- 用细针等物体按 RESET 钮。**
 - 如果在操作播放器时按 RESET 钮，所存储的数据和播放器设定可能会丢失。重设播放器后，按 **▶||** 钮开启播放器。


- 在各软件的帮助中查看问题相关信息。**

- 在其中一个客户支持网站查找问题相关信息。**
 - 关于客户支持网站，请参阅“有关最新信息”。

- 如果以上方法不能解决问题，请就近咨询 Sony 经销商。**

系统要求（对于播放器）


- 电脑
 - 预装了以下 Windows 操作系统*1 的 IBM PC/AT 兼容电脑：
 - Windows XP Home Edition*2
 - (Service Pack 3 或更高版本) / Windows XP Professional*2
 - (Service Pack 3 或更高版本) / Windows Vista Home Basic (Service Pack 1 或更高版本) / Windows Vista Home Premium (Service Pack 1 或更高版本) / Windows Vista Business (Service Pack 1 或更高版本) / Windows Vista Ultimate (Service Pack 1 或更高版本) / Windows 7 Home Basic/Windows 7 Home Premium/Windows 7 Professional/Windows 7 Ultimate 不支持上述以外的操作系统。
 - *1 不包括 Microsoft 不支持的操作系统版本。
 - *2 不包括 64 位操作系统版本。
- CPU: Pentium III 450 MHz 或更高 (Windows XP)、Pentium III 800 MHz 或更高 (Windows Vista)、Pentium III 1 GHz 或更高 (Windows 7)
- RAM: 256 MB 或以上 (Windows XP)、512 MB 或以上 (Windows Vista)、1 GB 或以上 (Windows 7 32 位版本)、2 GB 或以上 (Windows 7 64 位版本)
- 硬盘驱动器: 可用空间 600 MB 或以上

症状	原因/解决办法
播放器无法给电池充电。	<ul style="list-style-type: none">播放器未正确连接至电脑的 USB 接口。 <ul style="list-style-type: none">➔ 断开播放器连接，然后再重新连接。 电池是在 5 ℃ 至 35 ℃ 范围以外的环境温度下充电的。 <ul style="list-style-type: none">➔ 出现  图标时，无法对电池充电。请在 5 ℃ 至 35 ℃ 的环境温度下对电池充电。 电脑未打开。 <ul style="list-style-type: none">➔ 打开电脑。 您的电脑已进入睡眠或休眠状态。 <ul style="list-style-type: none">➔ 解除电脑的睡眠或休眠状态。
当将播放器连接到电脑时未出现 [已连接 USB]。	<ul style="list-style-type: none">播放器的 USB 接口未正确连接至电脑的 USB 接口。 <ul style="list-style-type: none">➔ 断开播放器的连接，然后再重新连接。 正在使用 USB 集线器。 <ul style="list-style-type: none">➔ 请将播放器直接连接至 USB 接口，因为通过 USB 集线器连接可能无法操作。但是，可以使用供电的 USB 集线器。 电脑上正在运行其他应用程序。 <ul style="list-style-type: none">➔ 断开播放器的连接，等待数分钟后重新连接。如果问题仍然存在，请断开播放器的连接，重新启动电脑，然后再重新连接播放器。 电脑上的 USB 接口可能有问题。 <ul style="list-style-type: none">➔ 将播放器连接到电脑上的其他 USB 接口。 剩余电量不足。 <ul style="list-style-type: none">➔ 将播放器连接至正在运行的电脑至少 5 分钟来对电池充电。对耗尽的电池进行充电时，电源照明器以顺时针方向闪烁，而显示屏中无内容。
当播放器与电脑连接时，播放器变得不稳定。	<ul style="list-style-type: none">正在使用 USB 集线器。 <ul style="list-style-type: none">➔ 请将播放器直接连接至 USB 接口，因为通过 USB 集线器连接可能无法操作。但是，可以使用供电的 USB 集线器。

当播放器与电脑连接时，播放器变得不稳定。

初始化（格式化）播放器

您可格式化播放器的内存。如果格式化内存，则所有快捷方式图标和包括用户手册 (HTML 文档) 在内的文件将被清除，且所有设定值将返回其默认设定。在进行格式化之前必须先检查内存中存储的文件，并将需要的文件导出至电脑硬盘或其他设备。

- 按住 BACK/HOME 钮直到出现主菜单。**
- 按顺序选择  [设定] - [初始化] - [格式化] - [确定]。**
 - 转动飞梭开关选择项目，然后按 **▶||** 按钮进行确认。选择 [确定] 并确认之后，出现 [正在格式化...] 并开始格式化。格式化完成时，出现 [完成]。

说明

- 请勿在 Windows 资源管理器中格式化播放器的内存。如果意外在 Windows 资源管理器中格式化播放器，请重新在播放器上进行格式化。
- 如果您意外格式化播放器的内存，请从“有关最新信息”中所述网站下载用户手册 (HTML 文档)。

注意事项

关于耳机

- 请勿将音量调得太大，以免影响听力。
- 音量过大时就会听不到外面的声音。避免在听力不应受到干扰时（如驾驶或骑车）使用本机。
- 由于附带的耳机是设计成可在户外使用的，声音会透过耳机传到外面来。请注意不要打扰周围的人。

注意

为减少火灾或触电的危险，请不要让本装置淋雨或受潮。请勿将电池（安装 的电池组或多个电池）长时间暴露在直射阳光、火焰或类似的过热热源附近。
额定电流 500mA
锂电池用户不可自行更换，如电池损坏需要更换，请联系专业人员。

程序版权所有 ©2011 Sony Corporation
文档版权所有 ©2011 Sony Corporation

有关最新信息

如果您对 Sony 产品有疑问或问题，或需要 Sony 产品兼容项目的信息，请访问以下网站。
对于在美国的用户：http://www.sony.com/walkmansupport
对于在加拿大的用户：http://www.sony.ca/ElectronicsSupport/
对于在欧洲的用户：http://support.sony-europe.com/DNA
对于在拉丁美洲的用户：http://www.sony-latin.com/index.crp
对于在中国的用户：http://service.sony.com.cn/KB/
对于在其他国家/地区的用户：http://www.sony-asia.com/support
对于购买海外机型的用户：http://www.sony.co.jp/overseas/support/

制造商：索尼公司
总经销商：索尼（中国）有限公司
地址：北京市朝阳区东三环北路霞光里 18 号佳程大厦 A 座 25 层
原产地：中国