

IC Recorder  
Operating Instructions



ICD-UX560F

4-573-933-53(1)



Refer to the Help Guide

This is the Operating Instructions, which provides you with instructions on the basic operations of the IC recorder. The Help Guide is an online manual. Refer to the Help Guide when you would like to know further details, operations and possible solutions when a problem occurs.

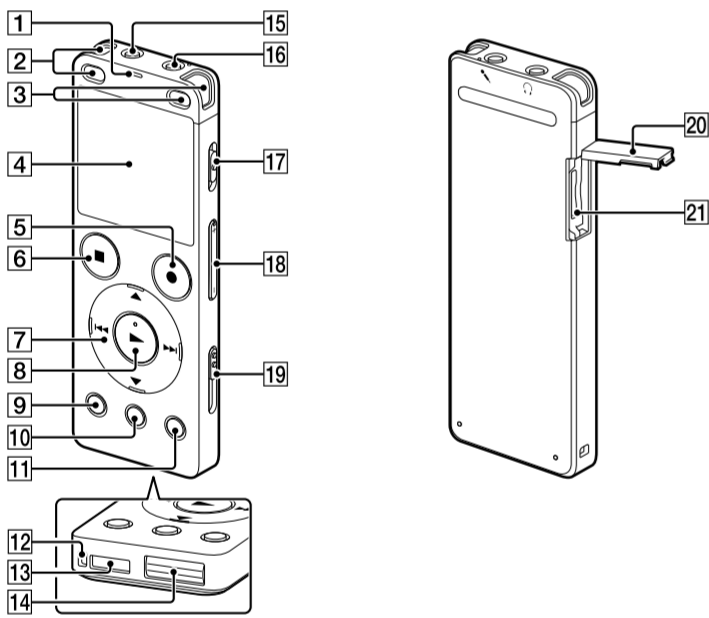
[http://rd1.sony.net/help/icd/u56/h\\_ce/](http://rd1.sony.net/help/icd/u56/h_ce/)



Check the supplied items

- IC Recorder (1)
- Operating Instructions (this sheet)
- Application Software, Sound Organizer 2 (Installer file stored in the built-in memory so that you can install it to your computer.)

Parts and controls

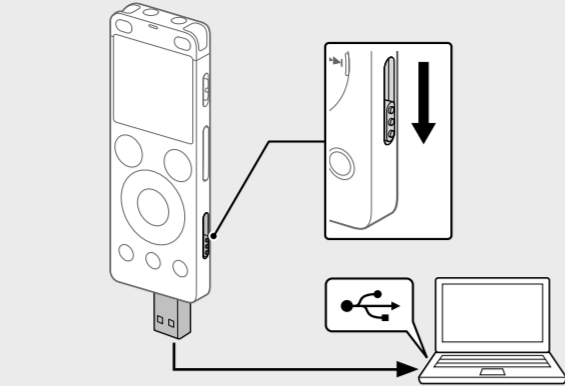


- 1 Operation indicator
- 2 Built-in microphones (stereo) (L)
- 3 Built-in microphones (stereo) (R)
- 4 Display window
- 5 REC/PAUSE (record/pause) button
- 6 STOP button
- 7 Control button (▲ DPC (Digital Pitch Control), ▼ A-B (repeat A-B), ◀◀ (review/fast backward), ▶▶ (cue/fast forward))
- 8 play/enter button\*
- 9 BACK/HOME button
- 10 T-MARK (track mark) button
- 11 OPTION button
- 12 Strap hole (No strap is supplied with your IC recorder.)
- 13 Built-in speaker
- 14 USB connector cover (You can find the USB connector retracted behind the cover.)
- 15 (headphones) jack
- 16 (microphone) jack<sup>†</sup>
- 17 POWER+HOLD switch<sup>‡</sup>
- 18 VOLUME +/- (volume +/-) button<sup>†</sup>
- 19 USB slide lever
- 20 Slot cover
- 21 microSD card slot (The card slot is located under the cover.)

\* The play/enter button, VOLUME +/- (volume +/-) button, and (microphone) jack have a tactile dot. Use the tactile dot as a reference when operating the IC recorder.  
† Sliding the POWER+HOLD switch to "POWER" and holding it for 8 seconds or longer restarts your IC recorder. For detailed instructions, refer to the Help Guide.

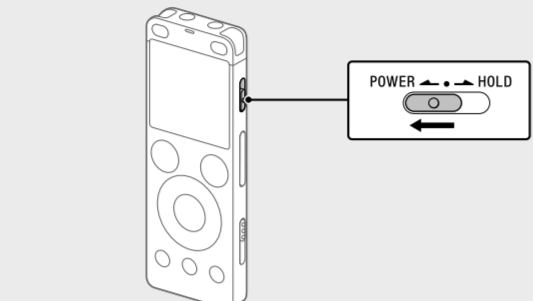
Let's try out your new IC recorder

Charge



- Charge the IC recorder.**  
Slide the USB slide lever in the direction of the arrow, and insert the USB connector into the USB port of a running computer. When the battery is fully charged, the battery indicator will indicate "Full."
- Disconnect the IC recorder.**  
Make sure that the operation indicator does not light. Then refer to the Help Guide to remove the IC recorder safely.

Power on



Slide and hold the POWER+HOLD switch in the direction of "POWER" until the window display appears. To turn the power off, slide the POWER+HOLD switch to "POWER" and hold it until "Power Off" appears on the display window.

To prevent unintentional operations (HOLD)

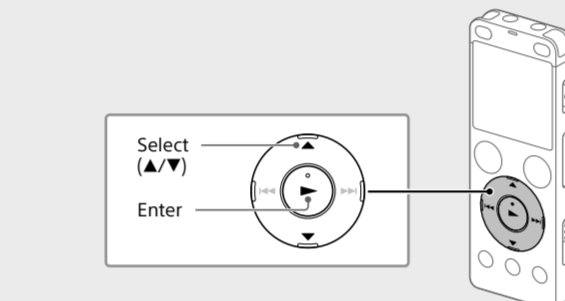
Slide the POWER+HOLD switch in the direction of "HOLD."

POWER → ← ← HOLD



To release the IC recorder from the HOLD status, slide the POWER+HOLD switch towards the center.

Initial settings



When you turn on your IC recorder for the first time, the "Configure Initial Settings" screen appears on the display window. You can then select the display language, set the clock, and turn on/off the beep sound.

- Select "Yes" to start the initial settings.
- Select the display language.  
You can select from the following languages: English\*, Español (Spanish), Français (French)  
\* Default setting
- Set the current year, month, day, hour, and minute.  
You can add a track mark at a point at which you want to divide a file later or locate during playback. You can add a maximum of 98 track marks to each file. You can also add track marks during recording.

To go back to the previous clock setting item, press BACK/HOME.

**Note**

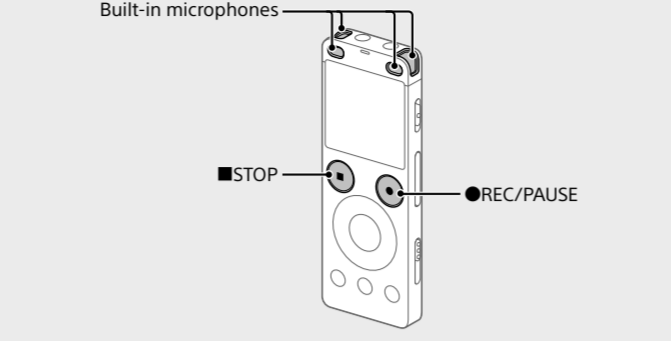
- If you take 30 seconds or longer before proceeding to the next step, the display window will turn off. To turn on the display window for continuing the initial settings, press BACK/HOME.
- You can change any of the initial settings at any time later. For detailed instructions, refer to the Help Guide.

The display window turns off automatically

The "Screen Off Timer" setting on your IC recorder is set to "30sec" by default to save battery power. If you leave the IC recorder untouched for 30 seconds, the display window will turn off, but you can still perform any button operations. To turn the display window back on, press BACK/HOME.

You can keep the display window from turning off or change the default setting to another timer interval. Press and hold BACK/HOME and select "Settings" - "Common Settings" - "Screen Off Timer," and then select "No Auto Screen Off," "15sec," "30sec," "1min," "3min," or "5min."

Record



- Before you start using the IC recorder, make sure that the POWER+HOLD switch is at the center dot position.
- You can select a recording scene for each situation by selecting "Scene Select" in the OPTION menu.

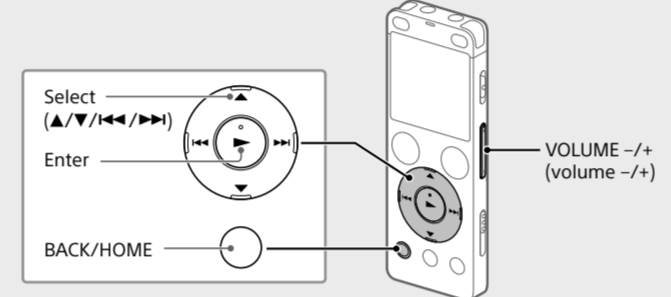
- Turn the IC recorder so that its built-in microphones point in the direction of the recording source.
- Press REC/PAUSE.  
Recording starts and the operation indicator lights in red.

During the recording, the peak meters appear to help you adjust the recording level (A). Please adjust the orientation of the built-in microphones, the distance from the sound source, or the sensitivity setting of the microphones so that the recording level stays around -12 dB, which fits within the optimum range, as illustrated above.

- Press STOP to stop recording.  
"Please Wait" appears first, and then the record standby screen appears.

After you stopped recording, you can press ▶ to play the file you have just recorded.

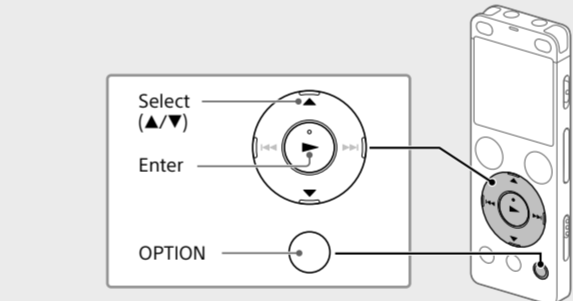
Listen



- Select "Recorded Files" from the HOME menu.
- Select "Latest Recording," "Search by REC Date," "Search by REC Scene," or "Folders."
- Select your desired file.  
Playback starts and the operation indicator lights in green.
- Press VOLUME +/- to adjust the volume.
- Press STOP to stop playback.

To add a track mark  
You can add a track mark at a point at which you want to divide a file later or locate during playback. You can add a maximum of 98 track marks to each file. You can also add track marks during recording.

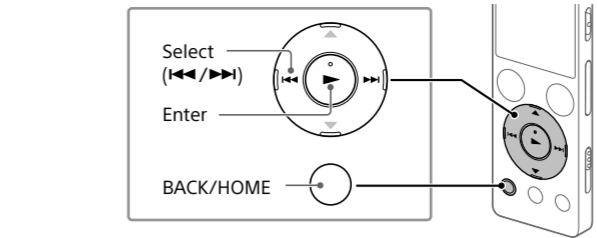
Delete



- Note**
- Once a file is deleted, you cannot restore it.
- Select the file you want to delete from the list of recorded files or playback the file you want to delete.
  - Select "Delete a File" from the OPTION menu.
  - Select "Yes."
- "Delete?" appears and the selected file starts playing for your confirmation.
- "Please Wait" appears and stays until the selected file is deleted.

Using the HOME menu

You can use the HOME menu for a variety of operations, including locating and playing a recorded file and changing the settings of your IC recorder.



- Press and hold BACK/HOME.  
The HOME menu screen appears.

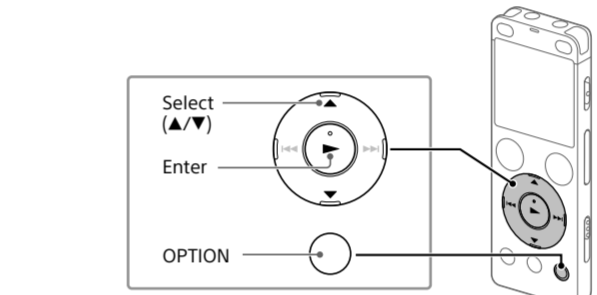
The HOME menu items are aligned in the following sequence.

Icon	Function	Description
Music	Music	You can select and play one of the files you have imported from a computer. To locate a music file, select "All Songs," "Albums," "Artists," or "Folders."
Recorded Files	Recorded Files	You can select and play one of the files you have recorded with your IC recorder. To locate a recorded file, select "Latest Recording," "Search by REC Date," "Search by REC Scene," or "Folders."
Record	Record	You can display the record standby screen, and then start recording.
FM Radio	FM Radio	You can display the FM radio screen, and then listen to or record radio broadcasts.
Settings	Settings	You can display the Settings menu screen and change various settings on the IC recorder.
Return to XX*	Return to XX*	You can go back to the screen that was displayed before the HOME menu screen. * The function you are currently using is displayed in "XX."

Press STOP to return to the screen displayed before you entered the HOME menu.

Using the OPTION menu

You can use the OPTION menu to perform a variety of functions, including changing the settings of your IC recorder. The available items differ depending on the situation.



- Select your desired function from the HOME menu, and then press OPTION.
- Select the menu item for which you want to change the setting.
- Select your desired setting option.

Copying files from your IC recorder to a computer

You can copy the files and folders from your IC recorder to a computer to store them.

- Follow the instructions in "Charge" to connect your IC recorder to a computer.
- Drag and drop the files or folders you want to copy from "IC RECORDER" or "MEMORY CARD" to the local disk on the computer.
- Disconnect your IC recorder from the computer.

Installing Sound Organizer 2

Install Sound Organizer on your computer. Sound Organizer allows you to exchange files between your IC recorder and your computer. Songs imported from music CDs and other media, MP3 and other audio files imported to a computer can also be played and transferred to the IC recorder.

- Note**
- Sound Organizer is compatible with Windows computers only. It is not compatible with Mac.
  - This IC recorder is compatible with Sound Organizer 2 only.
  - If you format the built-in memory, all data stored there will be deleted. (The Sound Organizer software will also be deleted.)
- When installing Sound Organizer, log in to an account with administrator privileges.

- Follow the instructions in "Charge" to connect your IC recorder to a computer.
- Make sure the IC recorder is successfully detected by the computer.  
"Connecting" appears and stays on the IC recorder's display window while the IC recorder is connected to the computer.
- Go to the [Start] menu, click [Computer], and then double-click [IC RECORDER] - [FOR WINDOWS].
- Double-click [SoundOrganizer\_V2001] (or [SoundOrganizer\_V2001.exe]).
- Make sure that you accept the terms of the license agreement, select [I accept the terms in the license agreement], and then click [Next].
- When the [Setup Type] window appears, select [Standard] or [Custom], and then click [Next].  
Follow the instructions on the screen and set the installation settings when you select [Custom].
- When the [Ready to Install the Program] window appears, click [Install].  
The installation starts.
- When the [Sound Organizer has been installed successfully.] window appears, check [Launch Sound Organizer Now], and then click [Finish].

**Note**  
You may need to restart your computer after installing Sound Organizer.

Precautions

- On power**  
Operate the unit only on 3.7 V DC with the built-in rechargeable lithium-ion battery.
- On safety**  
Do not operate the unit while driving, cycling or operating any motorized vehicle.
- On handling**
- Do not leave the unit in a location near heat sources, or in a place subject to direct sunlight, excessive dust or mechanical shock.
  - Should any solid object or liquid fall into the unit, have the unit checked by qualified personnel before operating it any further.
  - When using your IC recorder, remember to follow the precautions below in order to avoid warping the cabinet or causing the IC recorder to malfunction.
    - Do not sit down with the IC recorder in your back pocket.
    - Do not put your IC recorder into a bag with the headphones/earphones cord wrapped around it and subject the bag to strong impact.
  - Be careful not to allow water to splash on the unit. The unit is not waterproof. In particular, be careful in the following situations.
    - When you have the unit in your pocket and go to the bathroom, etc.
    - When you bend down, the unit may drop into the water and may get wet.
    - When you use the unit in an environment where the unit is exposed to rain, snow, or humidity.
    - In circumstances where you get sweaty. If you touch the unit with wet hands or if you put the unit in the pocket of sweaty clothes, the unit may get wet.
  - Listening with this unit at high volume may affect your hearing. For traffic safety, do not use this unit while driving or cycling.
  - You may feel pain in your ears if you use the headphones when the ambient air is very dry.
- This is not because of a malfunction of the headphones, but because of static electricity accumulated in your body. You can reduce static electricity by wearing non-synthetic clothes that prevent the emergence of static electricity.
- On noise**
- Noise may be heard when the unit is placed near an AC power source, a fluorescent lamp or a mobile phone during recording or playback.
  - Noise may be recorded when an object, such as your finger, etc., rubs or scratches the unit during recording.
- On maintenance**
- To soft the exterior, use a soft cloth slightly moistened in water. Then use a soft dry cloth to wipe the exterior. Do not use alcohol, benzene or thinner.
- If you have any questions or problems concerning your unit, please consult your nearest Sony dealer.

WARNING

Do not expose the batteries (battery pack or batteries installed) to excessive heat such as sunshine, fire or the like for a long time.

Specifications

**Capacity (User available capacity\*\*)**  
4 GB (approx. 3.20 GB = 3,435,973,837 Byte)

**Maximum recording time (Built-in memory)**  
The maximum recording time of all the folders is as follows.

Format	5 hours 20 minutes
LPCM 44.1 kHz/16 bit	5 hours 20 minutes
MP3 192 kbps <sup>†</sup>	39 hours 45 minutes
MP3 128 kbps	59 hours 35 minutes
MP3 48 kbps (MONO)	159 hours

**Note**  
When you are going to record continuously for a long time, you may need a USB AC adaptor (not supplied). For details on the battery life, see Battery Life. The maximum recording time in this topic is for your reference only.

**Battery Life (a built-in rechargeable lithium-ion battery) (JEITA)\*\***

Recording	Playback with the built-in speaker <sup>††</sup>	Playback with the headphones
LPCM 44.1 kHz/16 bit	Approx. 23 hours	Approx. 30 hours
MP3 192 kbps	Approx. 27 hours	Approx. 45 hours

**Dimensions (w/h/d) (not incl. projecting parts and controls) (JEITA)\*\***  
Approx. 36.6 mm × 101.5 mm × 10.5 mm

**Mass (JEITA)\*\***  
Approx. 52 g

**Temperature/Humidity**

Operating temperature	5°C - 35°C
Operating humidity	25% - 75%
Storage temperature	-10°C - +45°C
Storage humidity	25% - 75%

- Compatible memory cards**
- microSDHC cards from 4 GB to 32 GB
  - microSDXC cards of 64 GB or more
- \*1 A small amount of the internal memory is used for file management and therefore not available for user storage.  
\*\* When the built-in memory is formatted with the IC recorder.  
†† Default settings for the recording scenes.  
‡ Measured value by the standard of JEITA (Japan Electronics and Information Technology Industries Association)  
‡‡ The battery life may shorten depending on how you operate the IC recorder.  
‡‡‡ When playing back music with the built-in speaker with the volume level set to 27.

Trademarks

- Microsoft, Windows, Windows Vista and Windows Media are registered trademarks or trademarks of Microsoft Corporation in the United States and/or other countries.
- Mac OS is a trademark of Apple Inc., registered in the USA and other countries.
- MPEG Layer-3 audio coding technology and patents licensed from Fraunhofer IIS and Thomson.
- microSD, microSDHC and microSDXC logos are trademarks of SD-3C, LLC.

All other trademarks and registered trademarks are trademarks or registered trademarks of their respective holders. Furthermore, "TM" and "®" are not mentioned in each in this manual.

This product is protected by certain intellectual property rights of Microsoft Corporation. Use or distribution of such technology outside of this product is prohibited without a license from Microsoft or an authorized Microsoft subsidiary.

The "Sound Organizer 2" uses software modules as shown below: Windows Media Format Runtime

License

**Notes on the License**

This IC recorder comes with software that are used based on licensing agreements with the owners of that software. Based on requests by the owners of copyright of these software applications, we have an obligation to inform you of the following. Please read the following sections.

Licenses (in English) are recorded in the internal memory of your IC recorder. Establish a Mass Storage connection between the IC recorder and a computer to read licenses in the "LICENSE" folder.

**On GNU GPL/LGPL applied software**

The software that is eligible for the following GNU General Public License (hereinafter referred to as "GPL") or GNU Lesser General Public License (hereinafter referred to as "LGPL") are included in the IC recorder. This informs you that you have a right to have access to, modify, and redistribute source code for these software programs under the conditions of the supplied GPL/LGPL.

Source code is provided on the web. Use the following URL to download it: <http://www.sony.net/Products/Linux/>  
We would prefer you do not contact us about the contents of source code. Licenses (in English) are recorded in the internal memory of your IC recorder. Establish a Mass Storage connection between the IC recorder and a computer to read licenses in the "LICENSE" folder.

**Note**  
You may need to restart your computer after installing Sound Organizer.

