

Personal Audio System

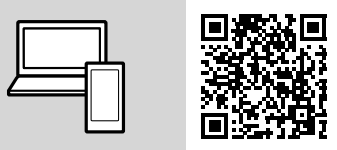
使用说明书
Operating Instructions
사용 설명서

操作本设备前，请先通读本指南并将其保存以备将来参考。



SRS-XB2 * 4 5 8 7 0 4 4 8 1 * (1)

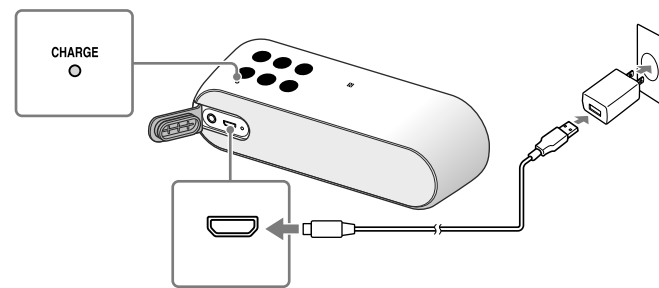
帮助指南
(适用于PC/智能手机的网络文档)
说明有关本机、BLUETOOTH连接方式等的详情。



<http://rd1.sony.net/help/speaker/srs-xb2/zh-cn/>

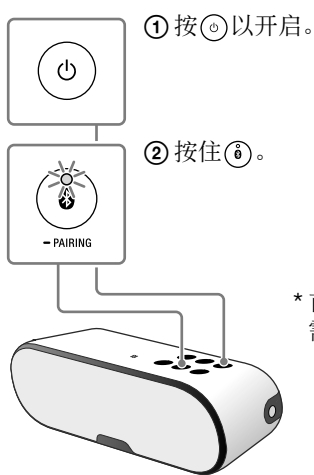
为本机充电

首次为电池充电。



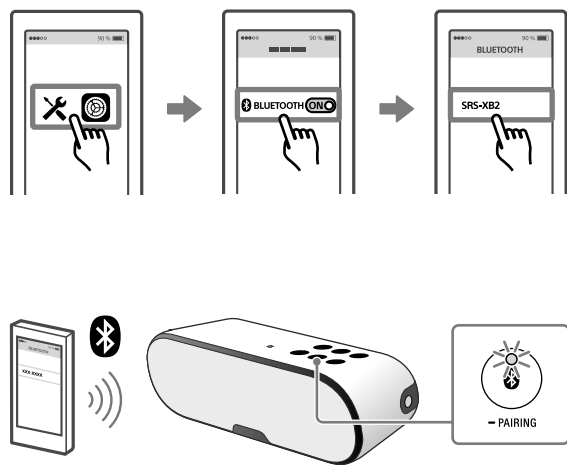
BLUETOOTH连接

1 将本机设定为配对模式。

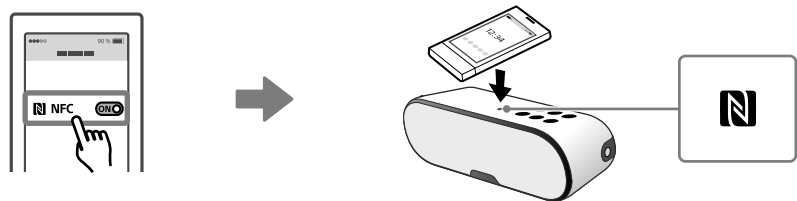


* 首次使用本机时无需执行步骤②。

2 将本机与智能手机/iPhone配对。



通过单触 (NFC) 连接

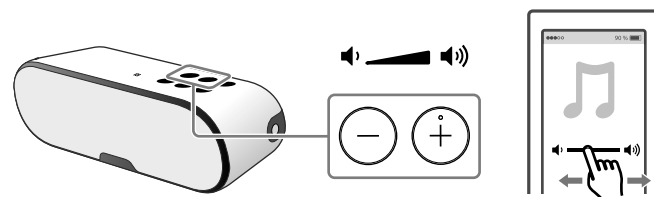


聆听

开始播放。



调节音量。

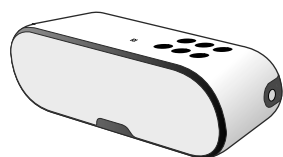


用两个装置聆听 (扬声器添加功能-双重模式/立体声模式)

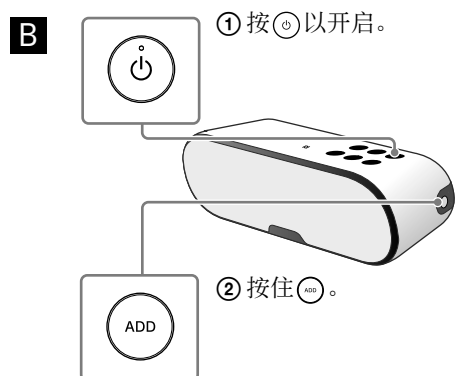
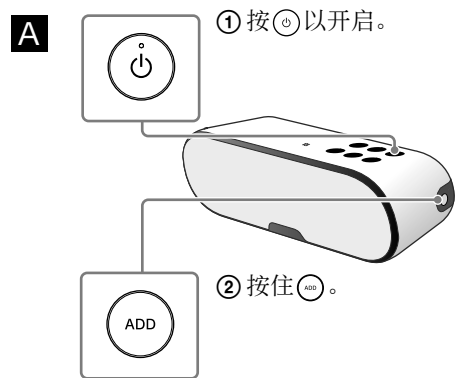
1 准备两个SRS-XB2装置。



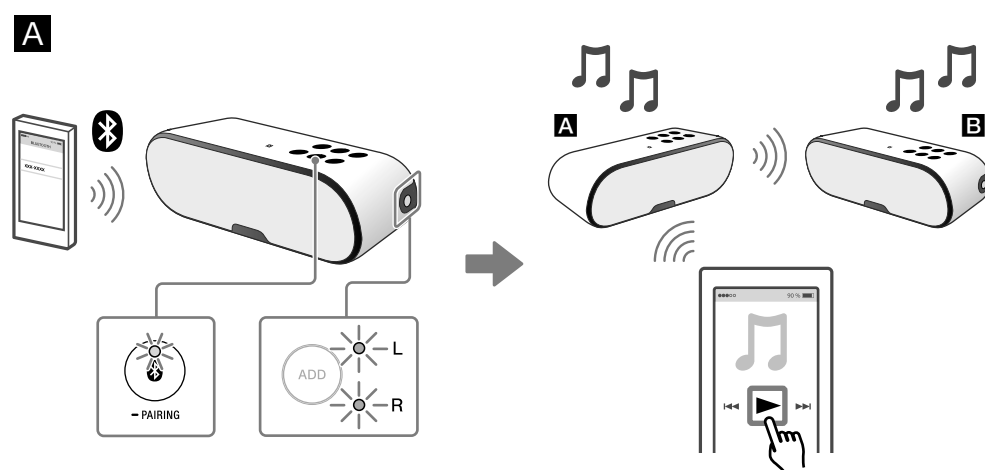
B 装置B



2 依次设定装置A和装置B。

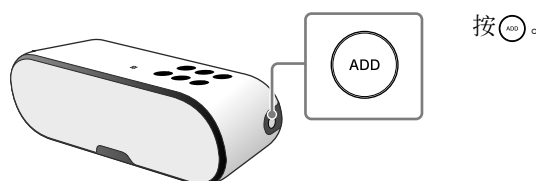


3 将智能手机/iPhone连接至指示灯点亮的装置A。



* 默认为双重模式。

切换双重模式/立体声模式 (左声道/右声道)





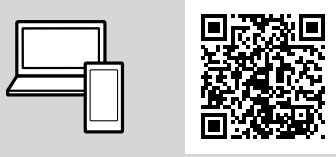
SRS-XB2

Help Guide

(web document for a PC/smartphone)
Explains detail about the unit, BLUETOOTH connection method, etc.

도움말 안내

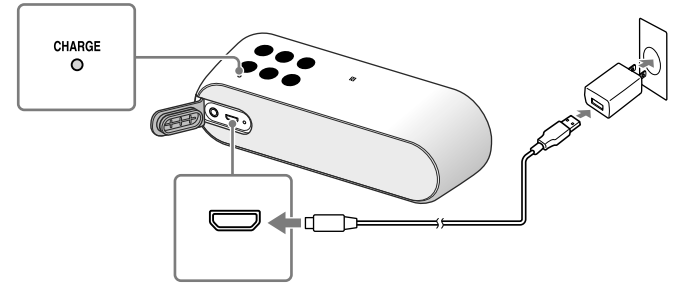
(PC/스마트폰용 웹 문서)
BLUETOOTH 연결 방법 등 기기에 대한 자세한 정보를 설명합니다.



http://rd1.sony.net/help/speaker/srs-xb2/h_zz/

Charging the unit
기기 충전하기

Charge the battery for the first time.
처음으로 배터리를 충전합니다.



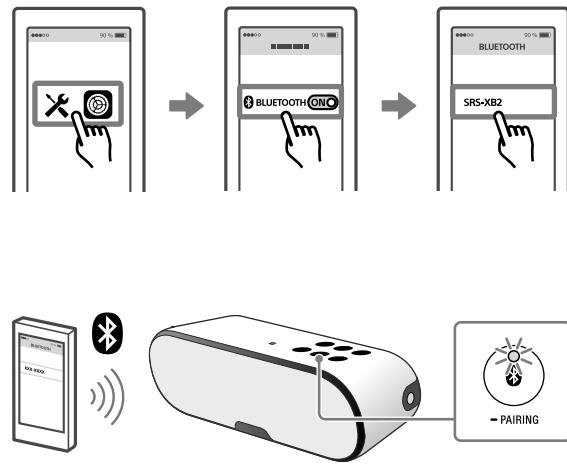
BLUETOOTH connection
BLUETOOTH 연결

1 Set the unit to the pairing mode.
기기를 페어링 모드로 설정합니다.

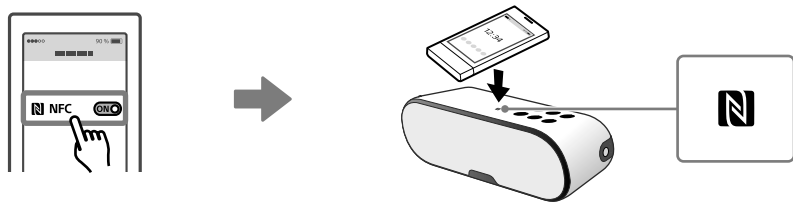


* Step ② is unnecessary when using the unit for the first time.
* 기기를 처음 사용할 때는 ② 단계가 불필요합니다.

2 Pairing the unit to your smartphone/iPhone.
스마트폰/iPhone에 기기를 페어링합니다.



To connect by One-touch (NFC)
원터치로 연결하려면 (NFC)

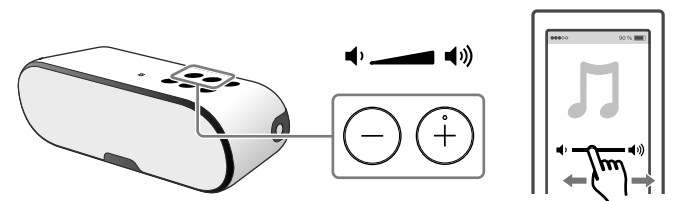


Listening
듣기

Start playback.
재생을 시작합니다.

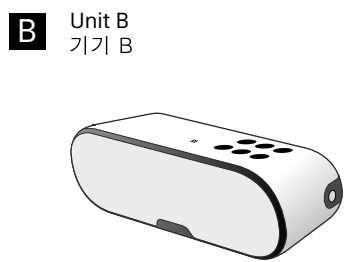


Adjust the volume.
볼륨을 조절합니다.

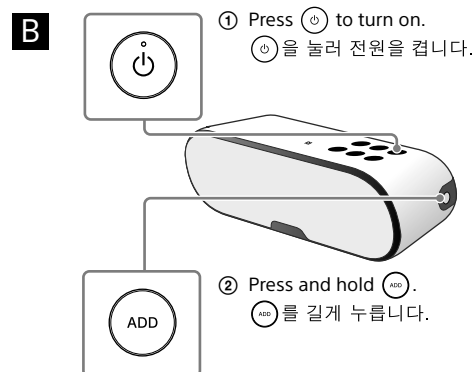
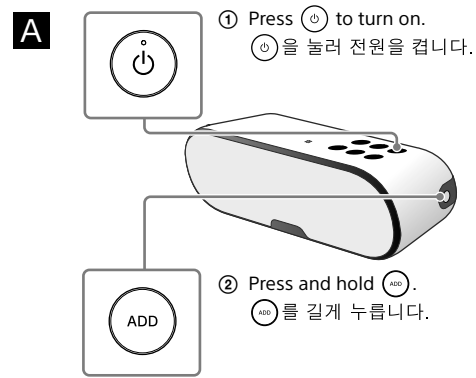


Listening with two units (Speaker Add function - double mode/stereo mode)
기기 두 개로 듣기(스피커 추가 기능 - 더블 모드/스테레오 모드)

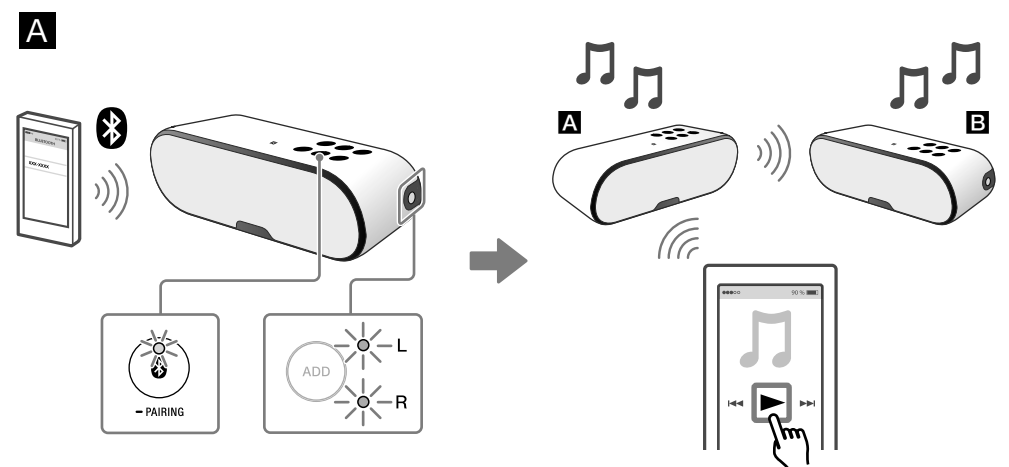
1 Preparation for two SRS-XB2 units.
SRS-XB2 기기 두 개를 준비합니다.



2 Set unit **A** and then **B**.
기기 **A**를 설정한 다음, **B**를 설정합니다.



3 Connect your smartphone/iPhone to unit **A** with the Bluetooth indicator lit.
Bluetooth 표시등이 점등된 기기 **A**에 스마트폰/iPhone을 연결합니다.



* The default is double mode.
* 기본 설정은 더블 모드입니다.

To switch double mode/stereo mode (Lch/Rch)
더블 모드/스테레오 모드(Lch/Rch)를 전환하려면

