

Personal Audio System

Operating Instructions



SRS-XB3



* 4 5 8 7 0 4 6 4 1 * (1)

Help Guide

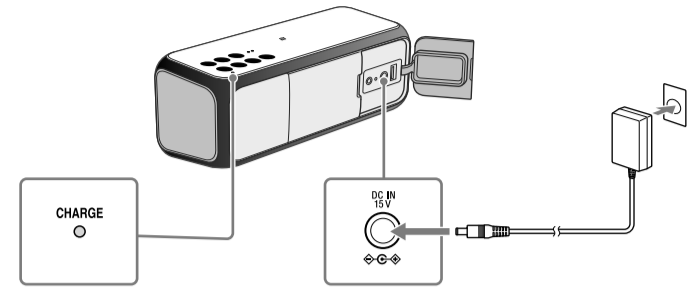
(web document for a PC/smartphone)
Explains detail about the unit, BLUETOOTH connection method, etc.



http://rd1.sony.net/help/speaker/srs-xb3/h_zz/

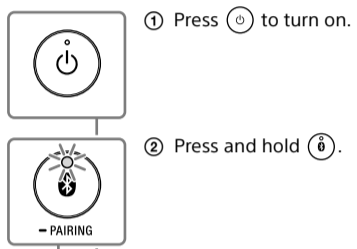
Charging the unit

Charge the battery for the first time.



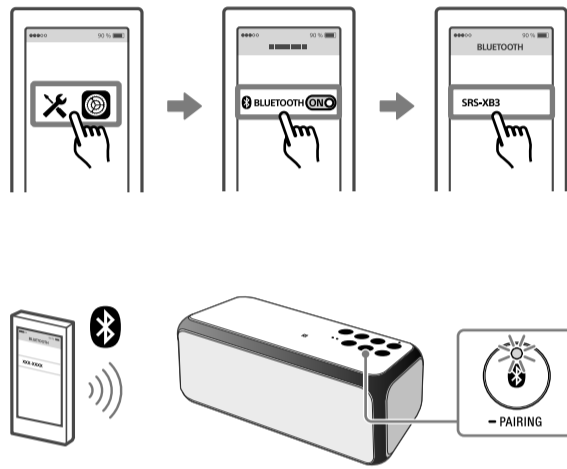
BLUETOOTH connection

1 Set the unit to the pairing mode.

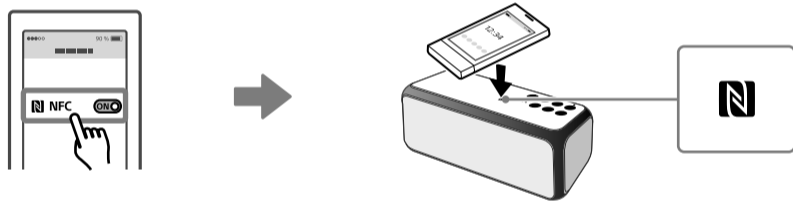


* Step ② is unnecessary when using the unit for the first time.

2 Pairing the unit to your smartphone/iPhone.



To connect by One-touch (NFC)

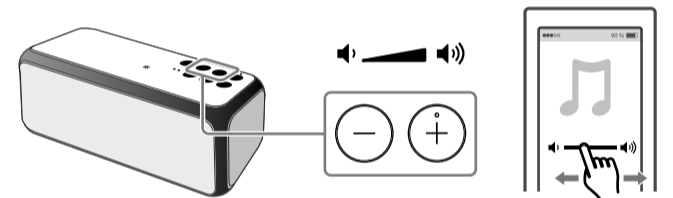


Listening

Start playback.

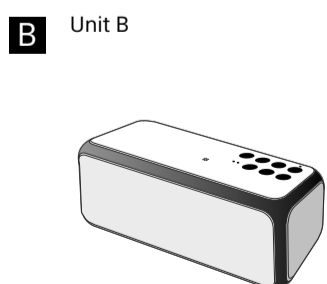
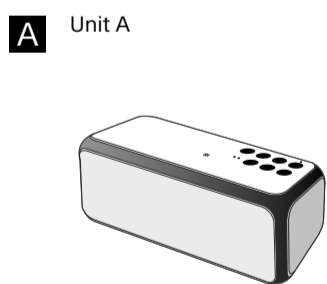


Adjust the volume.

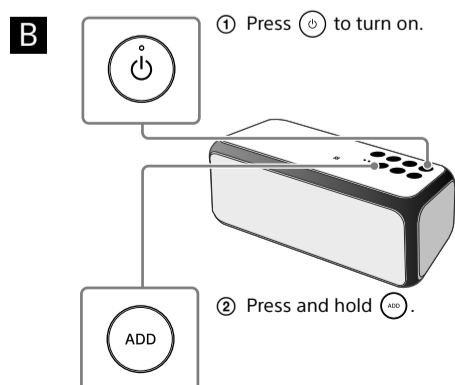
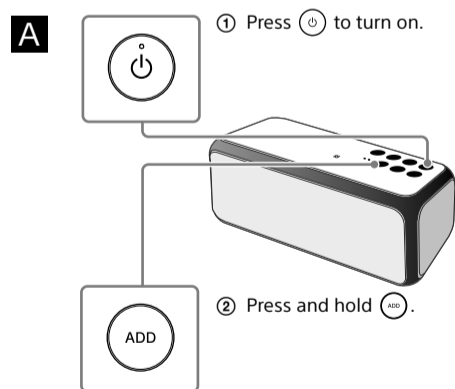


Listening with two units (Speaker Add function - double mode/stereo mode)

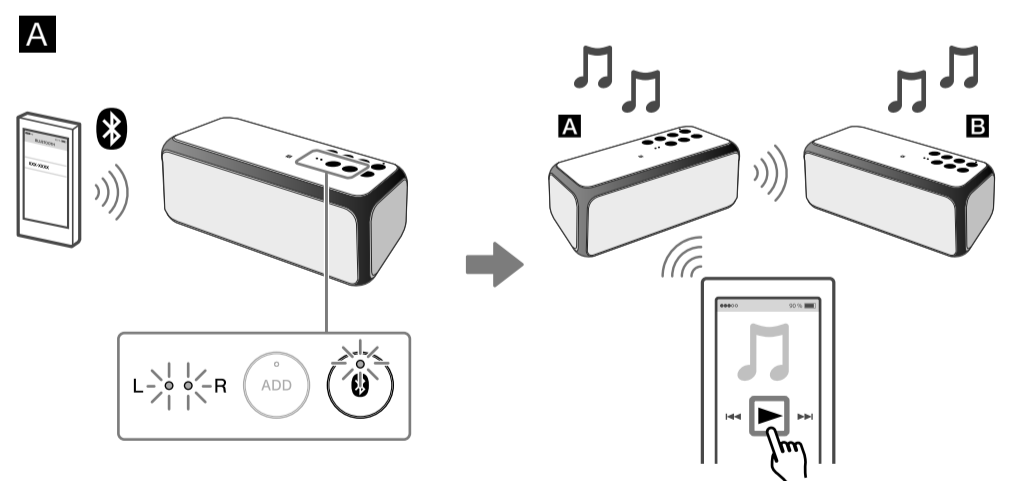
1 Preparation for two SRS-XB3 units.



2 Set unit **A** and then **B**.



3 Connect your smartphone/iPhone to unit **A** with the Bluetooth indicator lit.



* The default is double mode.

To switch double mode/stereo mode (Lch/Rch)

